

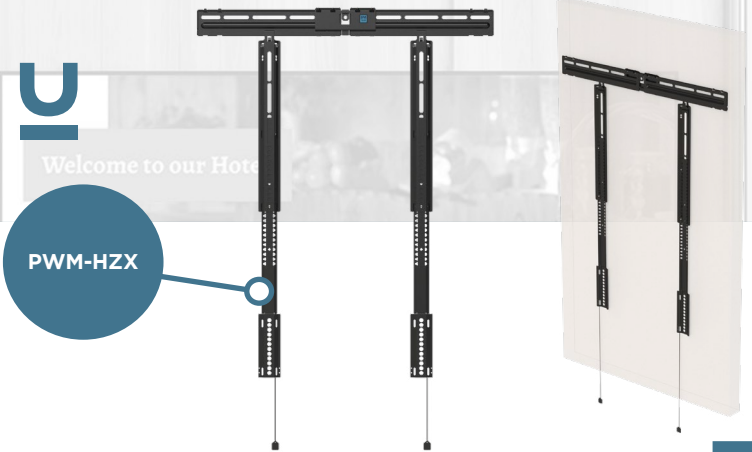
PM HORIZON SERIES

Create aesthetically pleasing, ADA-compliant digital signage applications with Premier Mount's new Horizon series. A line of ultra-low profile digital signage wall mounts engineered for displays up to 105" and 200 lbs. Featuring an incredibly slim depth 0.35" (8.89mm), these mounts help create seamless installations wherever they are installed.

FEATURES + BENEFITS



- 0.35" (8.89mm) depth ensures ADA compliance.
- Quick-release tabs for fast, toolless display removal & maintenance.
- Supports both landscape & portrait orientations.
- Post-installation lateral shift for fine-tuning display positioning without re-drilling.
- Supports a wide range of VESA patterns from 200 x 200mm to 1000 x 1000mm.
- Compatible with Premier Mounts' In-Wall Box AV Storage Solutions for a tidy, concealed AV setup.



PRODUCT SPECIFICATIONS

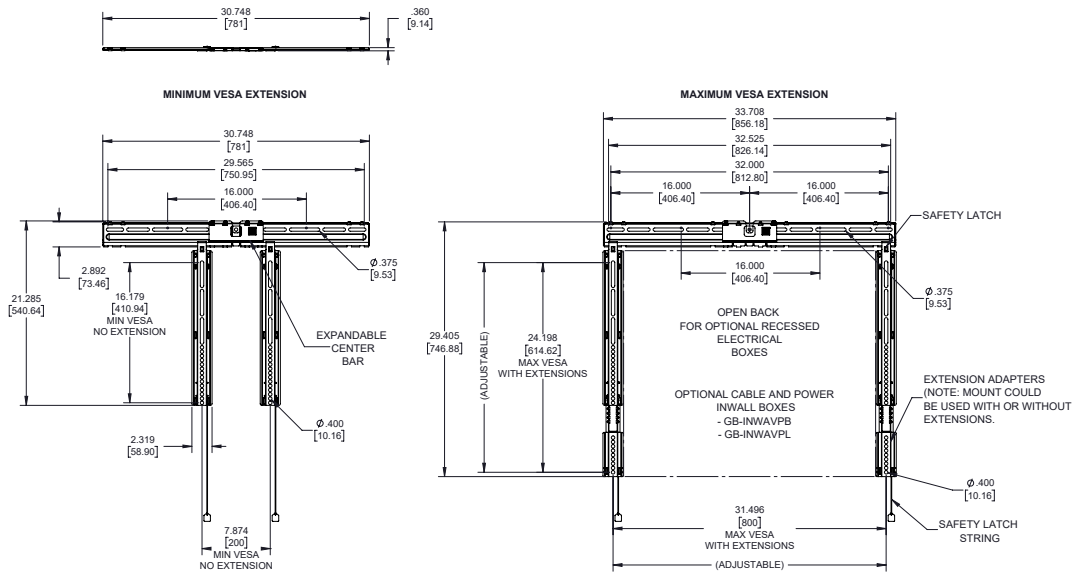


PART #'s	PWM-HZL	PWM-HZX
WEIGHT RATING	160lbs 72.5kg	200lbs 90.7kg
WIDTH	30.74" 781mm	46.53" 1182.07mm
HEIGHT	21.25" 540.64mm	45.03" 1144mm
DEPTH	.36" 9.14mm	.36" 9.14mm
PRODUCT WEIGHT	5lbs 2.27kg	7.5lbs 3.4kg

HORIZON SERIES CAD DRAWINGS

PWM-HZL

PART NUMBER: PWM-HZL	DESCRIPTION: PREMIER WALL MOUNT HORIZON LARGE	WEIGHT (LBS): 5	RATING (LBS): 200
----------------------	---	-----------------	-------------------



PWM-HZX

PART NUMBER: PWM-HZX	DESCRIPTION: PREMIER WALL MOUNT HORIZON XTRA LARGE	WEIGHT (LBS): 7.5	RATING (LBS): 200
----------------------	--	-------------------	-------------------

