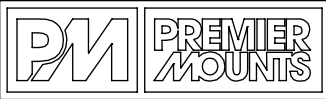


PRODUCT DIMENSIONS

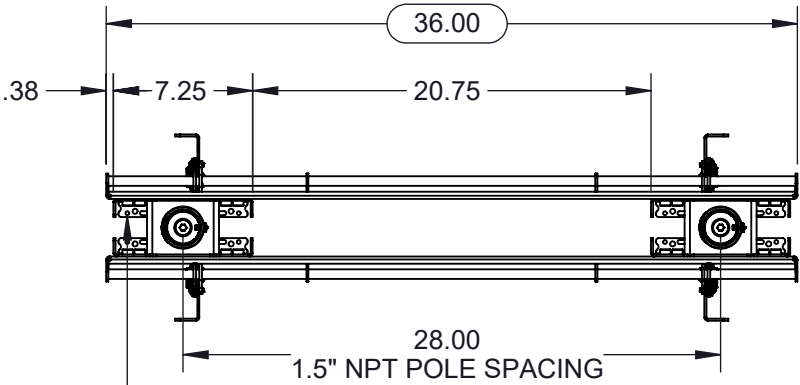


PART NUMBER:	PCM-B2XT	DESCRIPTION:	CEILING MOUNT, BTB-2, X-LARGE TILT w/ 1.5" NPT + CTM-MS3	WEIGHT (LBS):	75.3	RATING (LBS):	1000
--------------	----------	--------------	--	---------------	------	---------------	------

SEE DIMENSIONAL DRAWINGS FOR EACH PART FOR MORE INFORMATION:

- PSD-D
- CTM-MS3

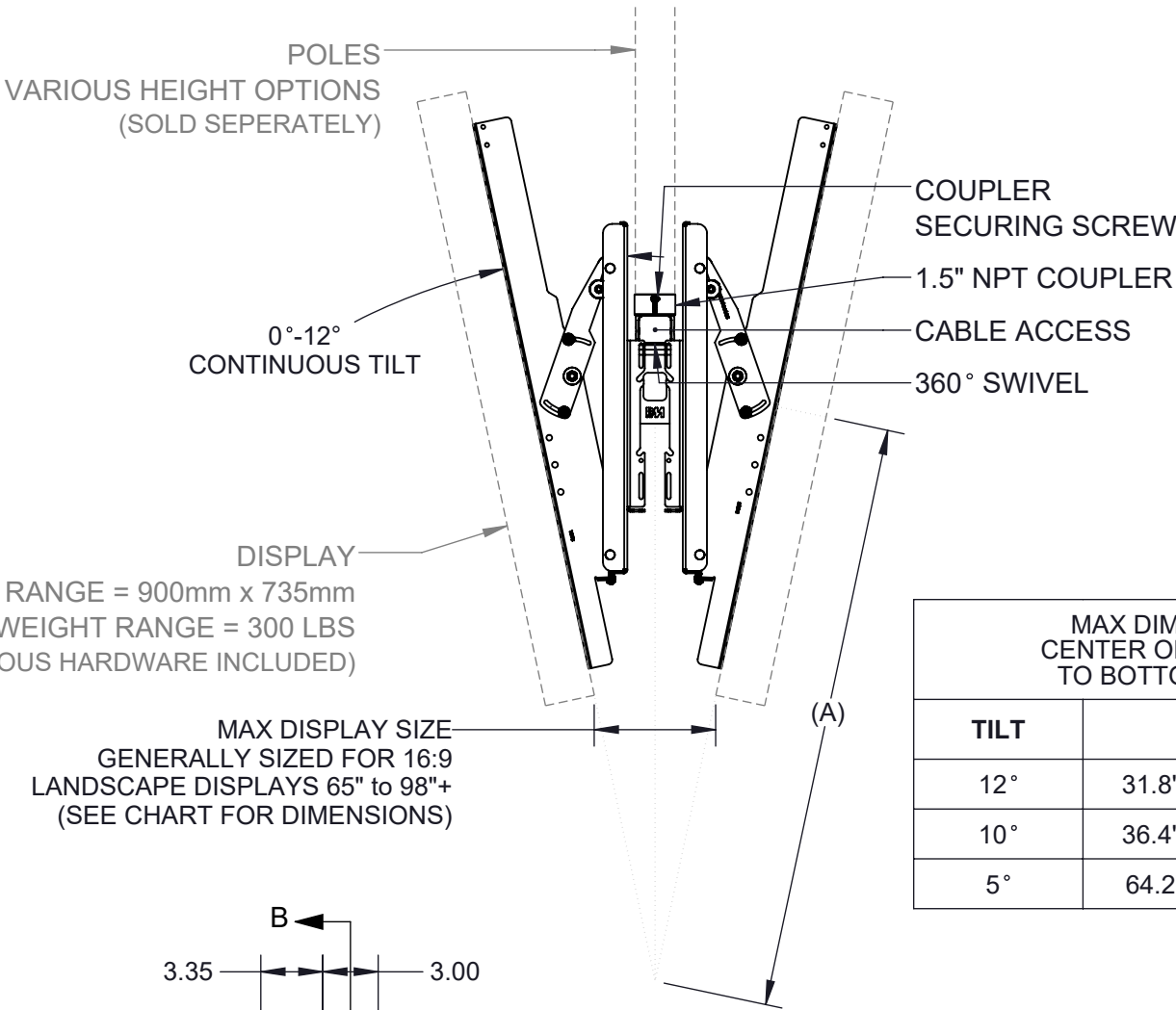
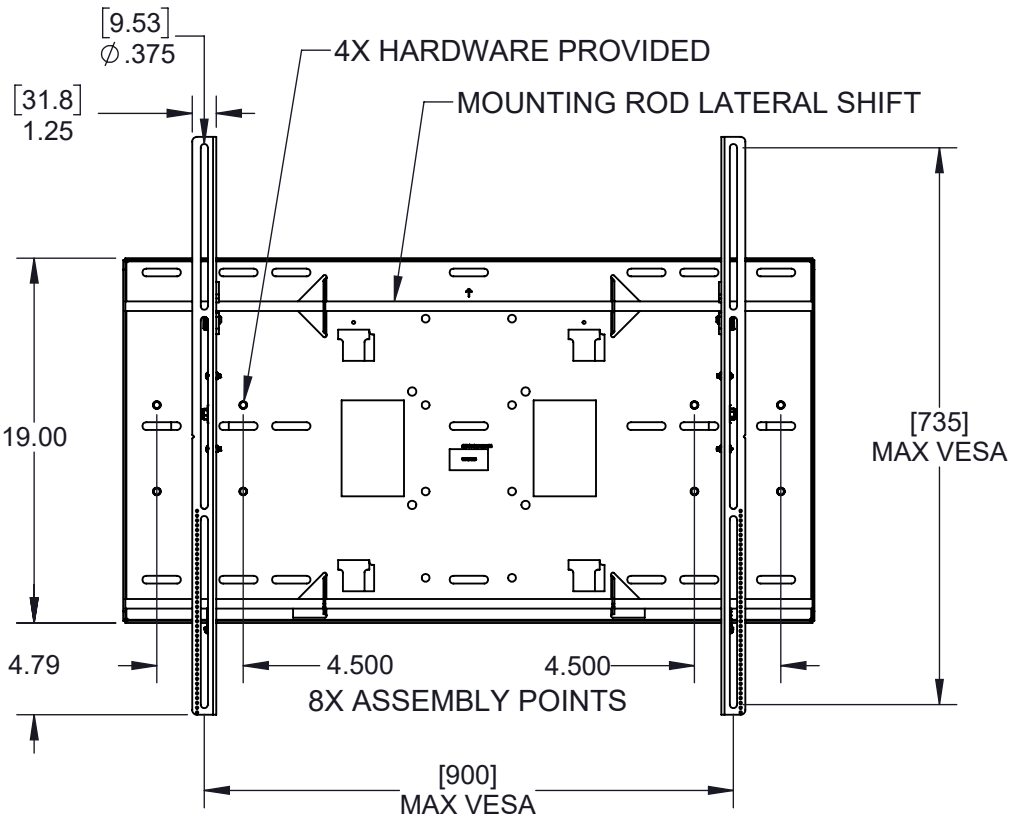
RATING (LBS): 300
PER DISPLAY



Ø .200
HOLES AND SLOTS FOR VARIOUS ACCESSORIES AND CABLES

- GANG BOXES
- MEDIA PLAYER BRACKETS

(PART # : 7170-1009. SOLD SEPERATELY)
#8-32 & THREAD FORMING HARDWARE INCLUDED



MAX DIMENSION FROM CENTER OF VESA PATTERN TO BOTTOM OF DISPLAY		
TILT	(A)	DISPLAY
12°	31.8" [806.8mm]	98"+
10°	36.4" [924.7mm]	98"+
5°	64.2" [1631mm]	98"+

