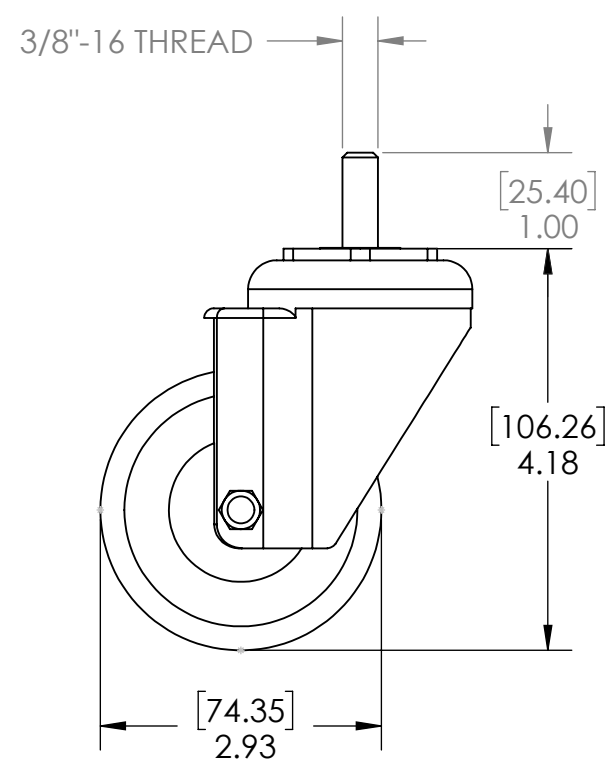
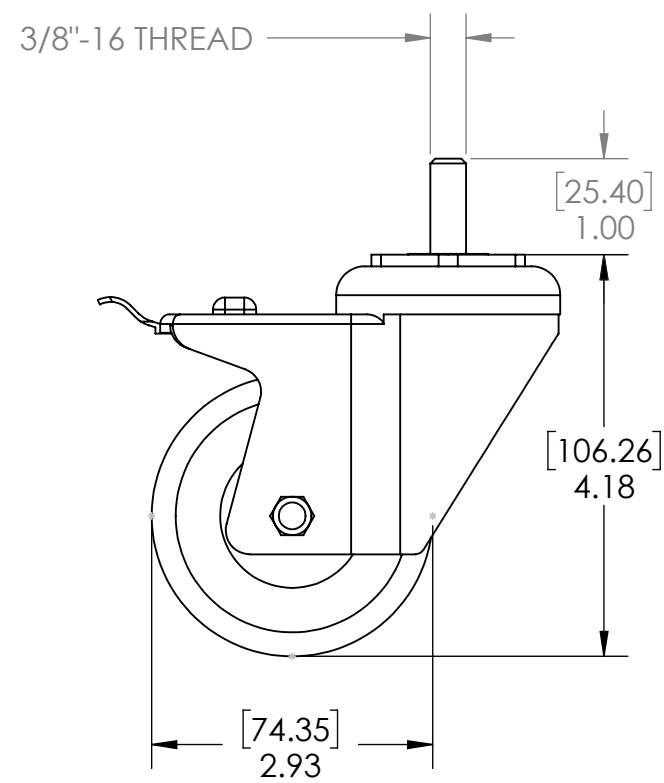


NON-LOCKING CASTER X2



LOCKING CASTER X2



- NOTES;
- 1. CAST-BW INCLUDES (2) LOCKING AND (2) NON-LOCKING CASTERS WITH 21MM WRENCH

DESCRIPTION: 3" DIAMETER, SET OF 4 CASTERS, (FOR BW-BASE)			
PART NO. CAST-BW			
MAX. WEIGHT CACITY LB.	DIMENSION ARE IN INCH AND [MM]	SCALE: 1:2	SHEET 1 OF 1

