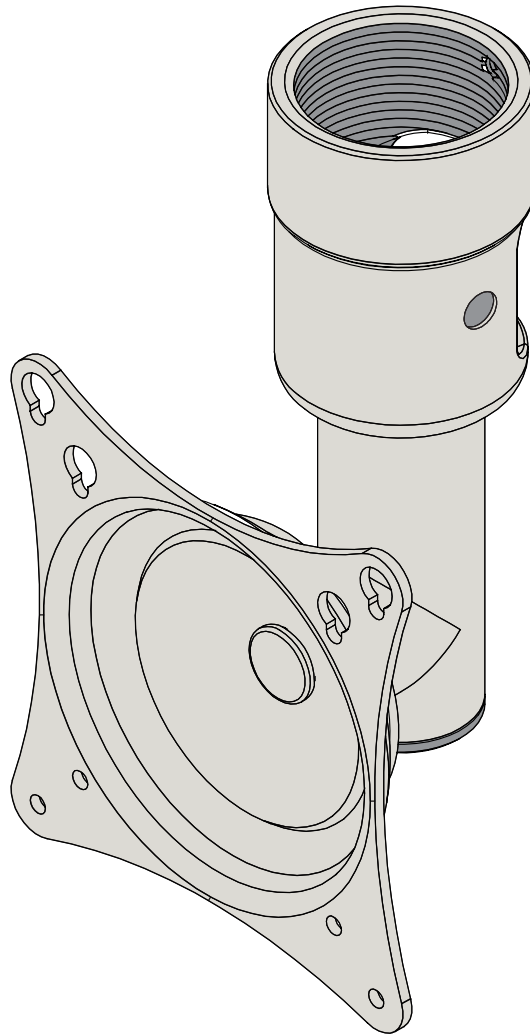


# PRC-LA

## Installation Guide



[premiermounts.com](http://premiermounts.com) | p. 800.368.9700 | e. [orders@premiermounts.com](mailto:orders@premiermounts.com)  
500 W Central Ave, Suite A, Brea, CA 92821 USA

## Weight Limit

Maximum Flat Panel Weight: **50 lbs.**

THE WALL STRUCTURE MUST BE CAPABLE OF SUPPORTING AT LEAST FOUR TIMES THE WEIGHT OF THE FLAT PANEL. IF NOT, THE WALL STRUCTURE MUST BE REINFORCED.

## Warning Statements



PRIOR TO THE INSTALLATION OF THIS PRODUCT, THE INSTALLATION INSTRUCTIONS MUST BE READ AND COMPLETELY UNDERSTOOD. KEEP THESE INSTALLATION INSTRUCTIONS IN AN EASILY ACCESSIBLE LOCATION FOR FUTURE REFERENCE.



PROPER INSTALLATION PROCEDURE BY A QUALIFIED SERVICE TECHNICIAN MUST BE FOLLOWED, AS OUTLINED IN THESE INSTALLATION INSTRUCTIONS. FAILURE TO DO SO COULD RESULT IN PROPERTY DAMAGE, SERIOUS PERSONAL INJURY, OR EVEN DEATH.



SAFETY MEASURES MUST BE PRACTICED AT ALL TIMES DURING THE ASSEMBLY OF THIS PRODUCT. USE PROPER SAFETY EQUIPMENT AND TOOLS FOR THE ASSEMBLY PROCEDURE TO PREVENT PERSONAL INJURY.



PREMIER MOUNTS DOES NOT WARRANT AGAINST DAMAGE CAUSED BY THE USE OF ANY PREMIER MOUNTS PRODUCT FOR PURPOSES OTHER THAN THOSE FOR WHICH IT WAS DESIGNED OR DAMAGE CAUSED BY UNAUTHORIZED ATTACHMENTS OR MODIFICATIONS, AND IS NOT RESPONSIBLE FOR ANY DAMAGES, CLAIMS, DEMANDS, SUITS, ACTIONS OR CAUSES OF ACTION OF WHATEVER KIND RESULTING FROM, ARISING OUT OF OR IN ANY MANNER RELATING TO ANY SUCH USE, ATTACHMENTS OR MODIFICATIONS.



At least two qualified people should perform the assembly procedure. Personal injury and/or property damage can result from dropping or mishandling the flat panel.



If mounting to wall studs or ceiling studs, make sure that the mounting screws are anchored into the center of the wall studs or ceiling studs. Use of an edge-to-edge stud finder is recommended.



It is recommended that a maximum of 5/8" plaster board be used when mounting to wooden studs.



Be aware of the mounting environment. If drilling and/or cutting into the mounting surface, always make sure that there are no electrical wires in wall. Cutting or drilling into an electrical line may cause serious personal injury.



Make sure there are no water or natural gas lines inside the wall where the mount is to be located. Cutting or drilling into a water or gas line may cause severe property damage or personal injury.

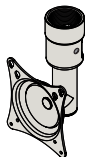


This product is intended for indoor use only. Use of this product outdoors could lead to product failure and/or serious personal injury.



Do not install near sources of high heat. Do not install on a structure that is prone to vibration, movement or chance of impact.

## Included components



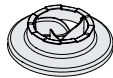
x1

PRC-LA



x1

UFP-280 Adapter Plate



x4

Universal Spacers



Thread Depth Indicator



M3 Allen Wrench



14mm Socket



x4

M4 x 5mm



x6

M4 x 10mm



x6

M4 x 12mm



x4

M4 x 12mm



x4

M6 x 12mm



x4

M8 x 12mm



x4

M8 x 20mm



x4

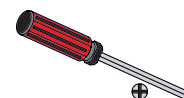
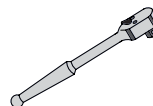
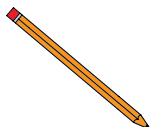
M6 x 20mm



x4

M4 x 10mm

## Required for installation



1

### Attaching the PRC-LA



The desired ceiling attachment must be installed prior to performing the following steps.

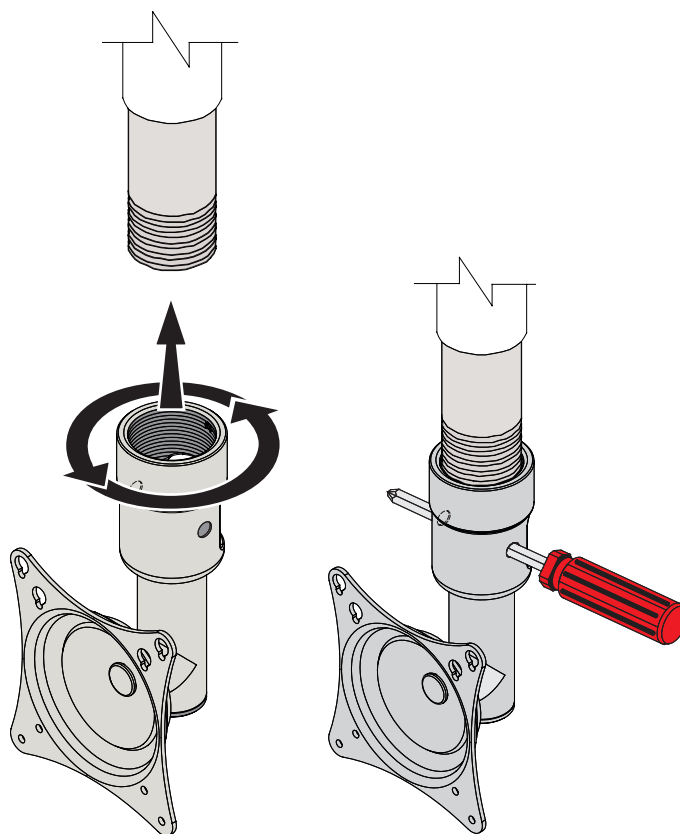
Screw the PRC-LA coupling adapter to the 1 1/2" NPT.



The PRC-LA must be threaded four (4) complete turns before tightening down the set screw.

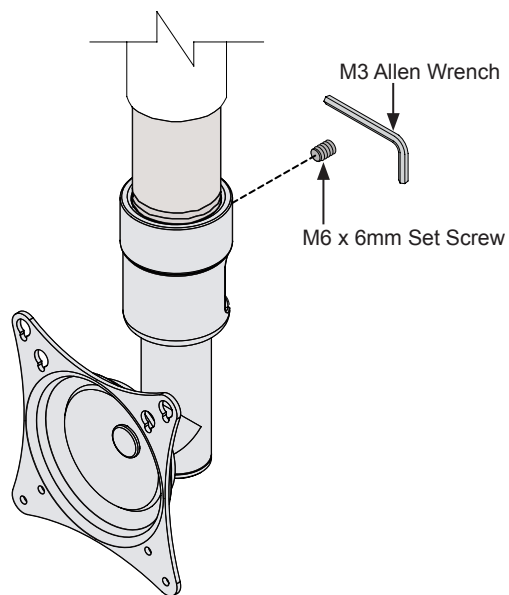


If you are having difficulty achieving four complete turns, insert a screwdriver through the access hole and apply pressure while turning the PRC-LA (see below).



2

Use the M3 Allen Wrench to tighten the M6 x 6mm set screw located on the side of the PRC-LA mount.

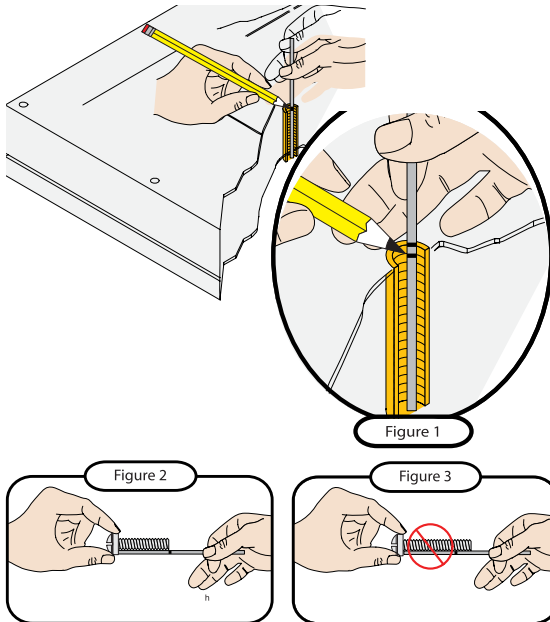


# PRC-LA

## Installation Guide

### Selecting the Mounting Hardware

3



- 1) Insert a small straw or toothpick into the threaded inserts found on the back of the flat panel.
- 2) Use a pencil to mark the depth of the threaded insert on the small straw or toothpick.
- 3) Mark the straw or toothpick 1/8" above the depth of the threaded insert, as shown in Figure 1.
- 4) Insert the small straw or toothpick into the remaining threaded inserts to compare and verify their depth using the straw or toothpick's 1/8" allowance mark.
- 5) Locate the correct diameter screw for the threaded insert.



If the screw you selected is longer than the 1/8" allowance mark on the small straw or toothpick, as shown in Figure 2 and Figure 3, do not use this screw. The screw length must not bypass the mark.

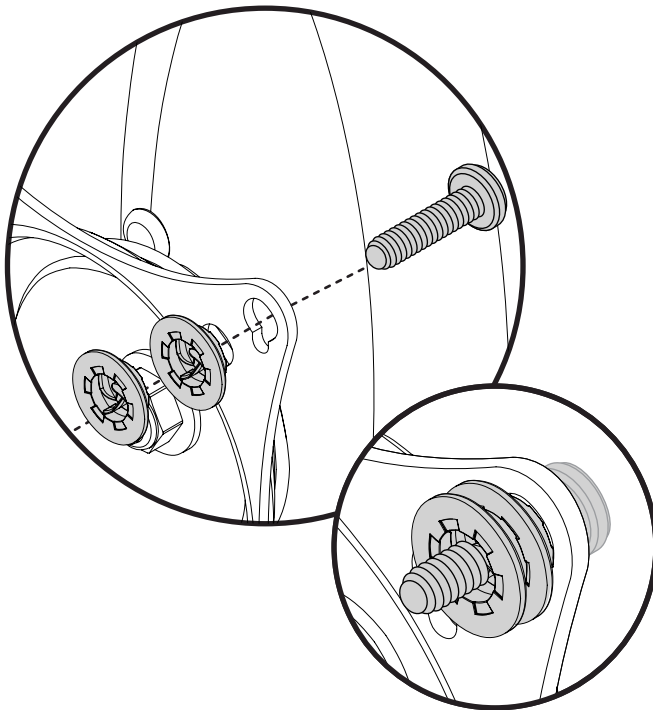
- 6) Test each size of the screws provided.



The correct screws should thread easily into the mounting point and not pull out when tension is applied.

### Universal Spacer Installation

4



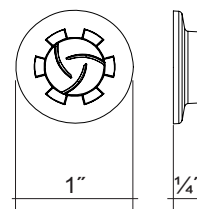
Premier Mounts' Universal Spacers allow you to attach the mounting bracket to flat-panels which have recessed or uneven mount points. Each Universal Spacer adds 1/4" to the distance between the mounting bracket and your flat-panel.



The Universal Spacers must be stacked and oriented as shown.

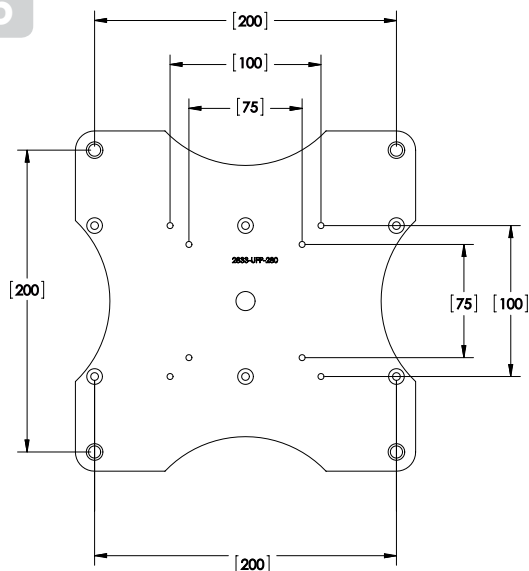


The Universal Spacers must only be installed between the mounting bracket and your flat-panel.



## UFP-280 Installation

5



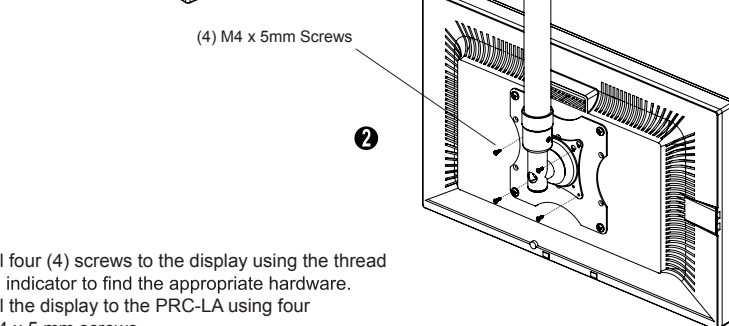
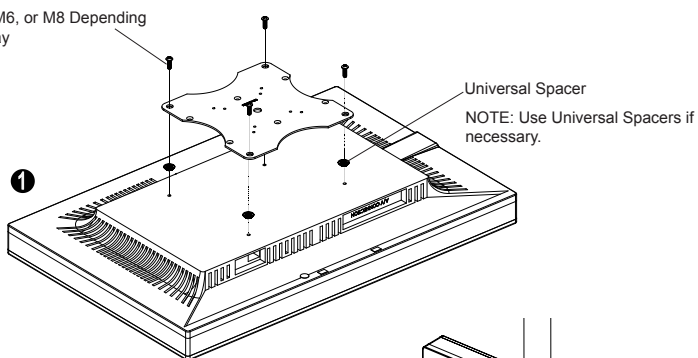
### Vesa Pattern

75 X 75 mm  
100 x 100 mm  
200 x 100 mm  
200 x 200 mm

### Screws

Use (4) M4 screws  
Use (4) M4 screws  
Use (6) M4 flat screws  
Use (4) M6 screws or (4) M8 screws  
(depending on display)

(4) M4, M6, or M8 Depending  
on display

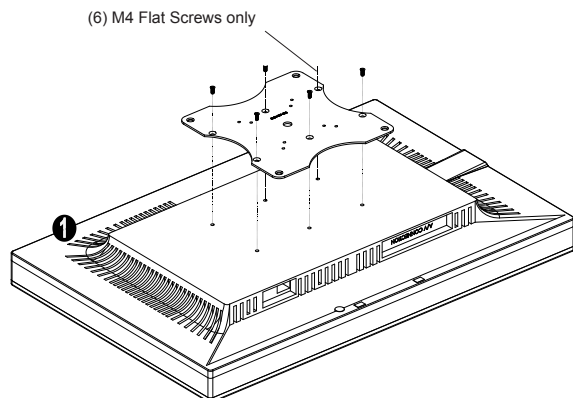


- 1) Install four (4) screws to the display using the thread depth indicator to find the appropriate hardware.
- 2) Install the display to the PRC-LA using four (4) M4 x 5 mm screws.

## UFP-280 (200x100mm) Installation

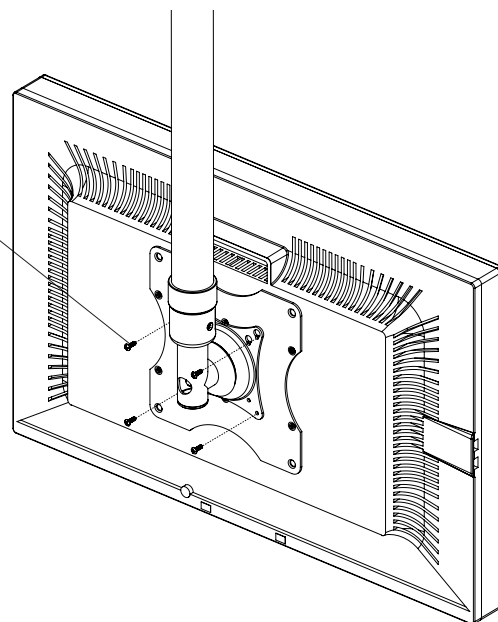
6

- 1) Use the four (4) M4 Flat screws for the display using the thread depth indicator to find the appropriate hardware.
- 2) Install the display to the PRC-LA using four (4) M4 x 5 mm screws.



(4) M4 x 5mm Screws

2



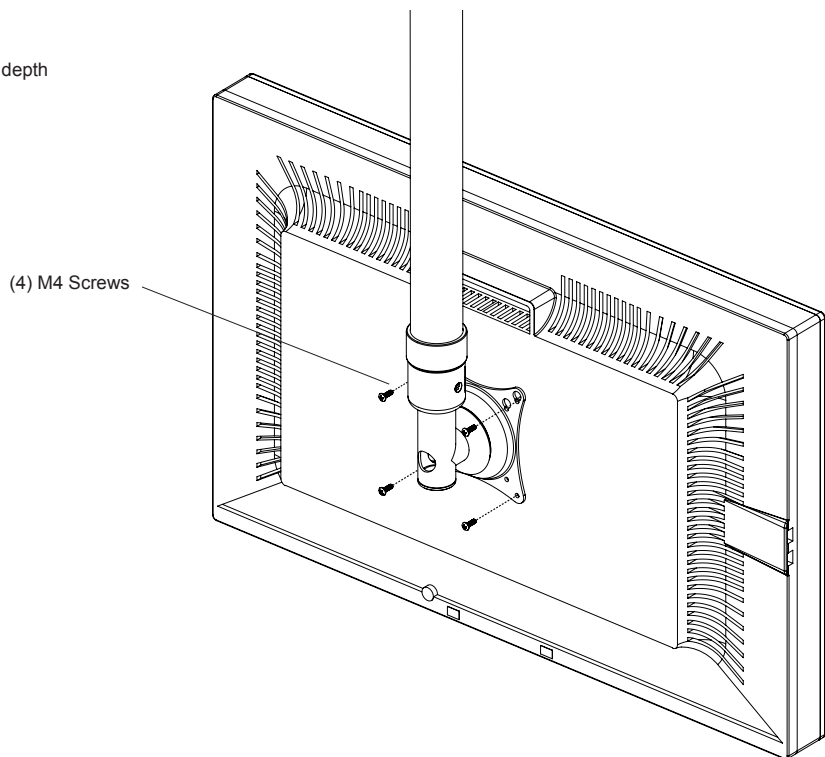
# PRC-LA

## Installation Guide

### Installing PRC-LA Mount with out UFP-280

7

Use the four (4) M4 screws for the display using the thread depth indicator to find the appropriate hardware.



### Adjusting the Mount Tension

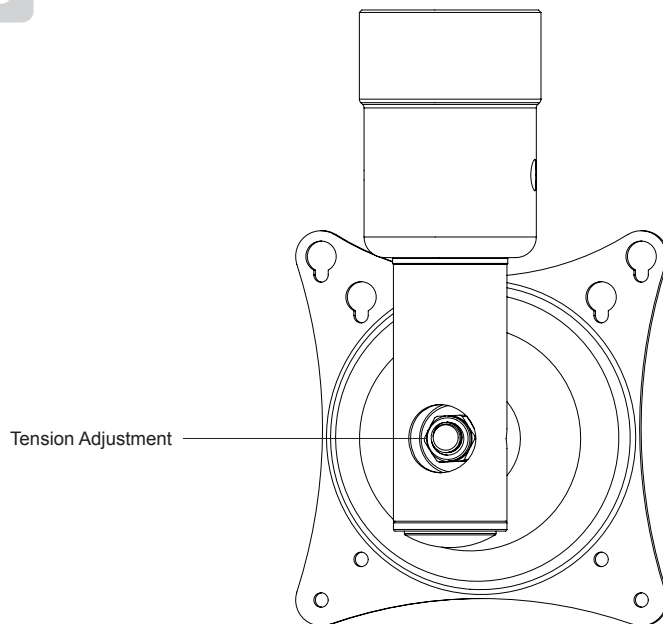
8

Use a socket wrench and the supplied 14mm socket to loosen or tighten the tension nut.

- Turn the tension nut clockwise to increase tension.
- Turn the tension nut counter-clockwise to decrease tension.



Do not overtighten the tension nut.



## **PREMIER MOUNTS LIMITED LIFETIME WARRANTY**

### **What and Who is Covered by this Limited Lifetime Warranty**

Premier Mounts warrants all mounting products to be free from defects in material and workmanship for the lifetime of the original installation of the product.

### **What Premier Mounts Will Do**

At the sole option of Premier Mounts, Premier Mounts will repair or replace any product or product part that is defective. If Premier Mounts chooses to replace a defective product or part, a replacement product or part will be shipped to you at no charge, but you must pay any related labor costs.

### **What is Not Covered: Limitations**

Premier Mounts disclaims any liability for damage to mounts, adapters, displays, projectors, other property, or personal injury resulting, in whole or in part, from improper installation, modification, use or misuse of its products.

NOTWITHSTANDING ANYTHING TO THE CONTRARY IN THIS WARRANTY, THIS WARRANTY IS LIMITED TO FIVE YEARS FROM THE DATE OF PURCHASE IN THE EVENT THAT THE WARRANTED PRODUCT IS COMMERCIALY RENTED OUT.

Electrical products and components, such as amplifiers, speakers, motors, switches remote controls and related electrical items, are backed by a 3-year warranty.

Premier Mounts disclaims all other warranties, express or implied, including warranties of merchantability and fitness for a particular purpose. Premier Mounts is not responsible for incidental or consequential damages, including but not limited to, inability to use its products or labor costs for removing and replacing defective products or parts. Some states do not allow the exclusion or limitation of incidental or consequential damages, so the above limitation or exclusion may not apply to you.

### **What Customers Must Do for Warranty Service**

If you discover a problem that you think may be covered by the warranty, you must report it in writing to the address below within thirty (30) days. Proof of purchase (an original sales receipt) from the original consumer purchaser must accompany all warranty claims. Warranty claims must also include a description of the problem, the purchaser's name, address, and telephone number. General inquiries can be addressed to Premier Mounts Customer Service at 1-800-368-9700. Warranty claims will not be accepted over the phone or by fax.

### **PREMIER MOUNTS**

#### **ATTN: Warranty Claims**

500 W Central Ave, Suite A  
Brea, CA 92821

### **How State Law Applies**

This warranty gives you specific legal rights, and you may also have other rights which vary from state to state.

Premier Mounts intends to make this manual accurate and complete. However, Premier Mounts makes no claim that the information contained herein covers all details, conditions or variations, nor does it provide for every possible contingency in connection with the installation or use of this product. The information contained in this document is subject to change without notice or obligation of any kind. Premier Mounts makes no representation of warranty, expressed or implied, regarding the information contained herein. Premier Mounts assumes no responsibility for accuracy, completeness or sufficiency of the information contained in this document.

### **©PREMIER MOUNTS**

500 W Central Ave, Suite A  
Brea, CA 92821

### **USA & CANADA**

Phone: 800-368-9700

Fax: 800-832-4888

e. [orders@premiermounts.com](mailto:orders@premiermounts.com)

