

PP-ITC48 & PP-ITC1016 Installation Guide

“I” BEAM & TRUSS PIPE FITTING CLAMPS

Step 1:

Chose were the truss would be located. Unscrew the adjustable nuts to expand the truss to fit over the “I” beam.

Step 2:

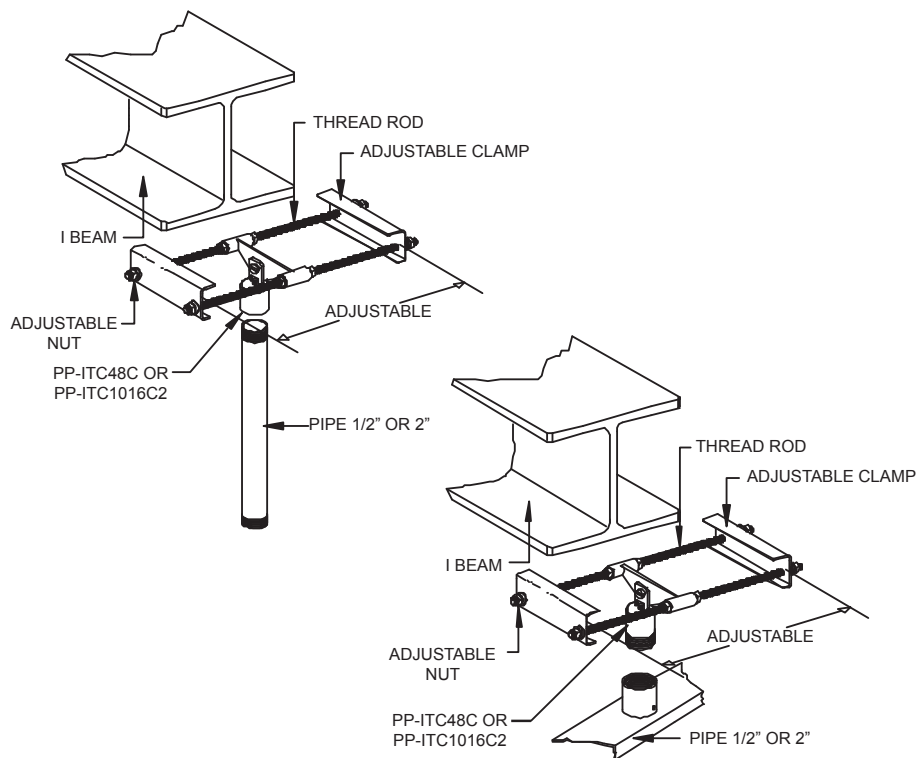
Secure the truss beam by screwing the adjustable nuts against the truss. The center point of the thread pipe fittings can be positioned anywhere along the open thread path of the “all thread” rods with positive locking of the set position. (Do not over tight).

PP-ITC48C / PP-ITC1016C

Secure the 1 1/2” or 2” pipe to the pipe coupling style then secure the Allen socket to the pipe.

PP-ITC48P / PP-ITC1016P2

Secure the 1 1/2” or 2” pipe to the pipe coupling style then secure the Allen socket to the pipe.



These new clamps can easiily support weights up to 175 lbs. (1 1/2”) fittings and 350 lbs. (2”) fittings properly installed by qualified personnel.

9533-016-001-1X_2

