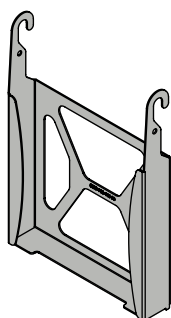


Mac mini™ Mounting Bracket Installation Instructions



The Mac mini™ Mounting Bracket is the perfect accessory for securely holding a Mac mini™ behind any of Premier Mounts' CTM, PCM and PRO Tilt Series mounts (sold separately).

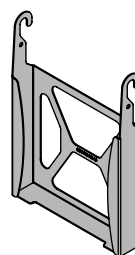


premiermounts.com

p. 800.368.9700 | e. orders@premiermounts.com

500 W Central Ave, Suite A, Brea, CA 92821 USA

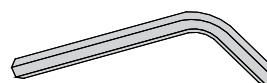
Parts List



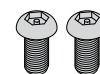
Mac mini™ Mounting Bracket
(Qty 1)



PanelLock™ Security Hook
(Qty 2)



M5 Allen Wrench
(Qty 1)



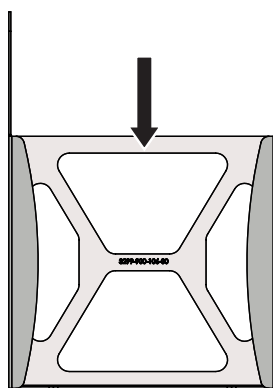
M6 x 12mm Lock-It™ Security Screw
(Qty 2)

Step 1

Place the Mac mini™ facedown in the slot of the Mac mini™ Mounting Bracket.

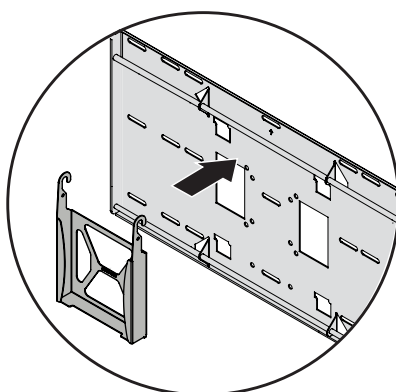


The Mac mini™'s DVD drive should be accessible from the bottom of the mounting bracket.



Front View

Step 3



Hook the Mac mini™ Mounting Bracket on the top mounting bar of the mount (Mac mini™ not shown).



The mount must be installed before attaching the Mac mini™ Mounting Bracket.



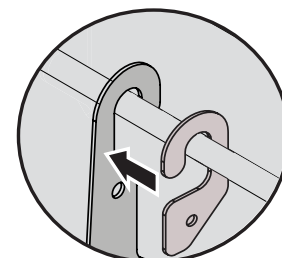
If using the mounting bracket with a PRO tilt mount, the bottom tabs of the mounting bracket should lock behind the bottom hooks of the back plate.

Step 4

Slide a PanelLock™ security hook on the top mounting bar, placing it on the outside edge of the Mac mini™ Mounting Bracket.

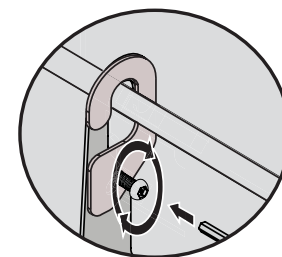


Make sure the PanelLock™ security hook is facing the same direction as shown.



Step 5

Insert and tighten one (1) M6 x 12mm Lock-It™ security screw to attach the PanelLock™ security hook to the Mac mini™ Mounting Bracket.



Step 6

Repeat steps 4 and 5 to attach the remaining PanelLock™ security hook on the other side of the Mac mini™ Mounting Bracket.

When finished, the mounting bar of the mount will effectively lock the Mac mini™ in place and prevent theft.

• All trademarks are the property of the respective trademark owners.