



# **SAMSUNG**

## **SOLUTIONS GUIDE**

**EDUCATION SECTOR MOUNTING SOLUTIONS GUIDE**



# DISPLAY SOLUTIONS

Fixed and mobile mounting solutions providing reliability, durability, versatility and safety! Optimizing your collaborative space is our top priority.



P2642F

**Flat Panel Mount**

**VESA:** 200mm x 200mm - 535mm x 400mm  
**Weight Limit:** 130lbs | 59.1kg



P4263T

**Tilt Mount**

**VESA:** 200mm x 200mm - 800mm x 525mm  
**Weight Limit:** 175lbs | 79.5kg



CTM-MS1

**Tilt Mount**

**VESA:** 100mm x 100mm - 490mm x 360mm  
**Weight Limit:** 160lbs | 72.5kg



CTM-MS2

**Tilt Mount**

**VESA:** 200mm x 200mm - 800mm x 505mm  
**Weight Limit:** 160lbs | 72.5kg



AM95

**Articulating Mount**

**VESA:** 200mm x 200mm - 600mm x 400mm  
**Weight Limit:** 95lbs | 43kg



AM175

**Articulating Mount**

**VESA:** 200mm x 200mm - 650mm x 820mm  
**Weight Limit:** 175lbs | 79.5kg



AM300-B

**Articulating Mount**

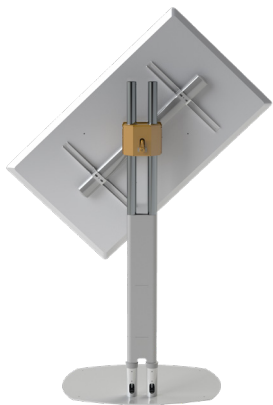
**VESA:** 225mm x 225mm - 984mm x 667mm  
**Weight Limit:** 300lbs | 136kg



FPS-200

**Motorized Mount**

**VESA:** 200mm x 200mm - 600mm x 400mm  
**Weight Limit:** 250lbs | 113.6kg



**Samsung Flip Stand**

**PM PART #:** RTMS-FLIP

**COMPATIBLE DISPLAYS:**

WM55R, WM65R, WM75A

**FEATURES:**

- 360° rotation for portrait or Landscape Orientation
- integrated tilt-adjustment tool
- works with dual-pole floor stands
- includes universal mounting hardware



**WM55H-FLIP Cart**

**PM PART #:** BW-BASE-FLIP-W

**COMPATIBLE DISPLAYS:**

WM55R, WM65R, WM75A

**FEATURES:**

- flat panel display support
- dual-pole flat panel display mount
- locking & non-locking casters

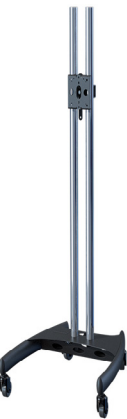


**Dual-Pole Elliptical Base**

**PM PART #:** EB-BASE, T72, CAST

**COMPATIBLE MOUNTS:**

CTM-MS1, CTM-MS2  
PFDM2, PTDM2



**Dual-Pole Nesting Base**

**PM PART #:** BW-BASE, T72, CAST-BW

**COMPATIBLE MOUNTS:**

CTM-MS1, CTM-MS2  
PFDM2, PTDM2



# DIRECTVIEW LED | CONVERGENT

Our newest line of narrow pixel pitch, Convergent, is the first of it's kind for DirectView LED mounts! With Convergent, installation is safer, faster and more cost effective than any other mount on the market.

## FEATURES

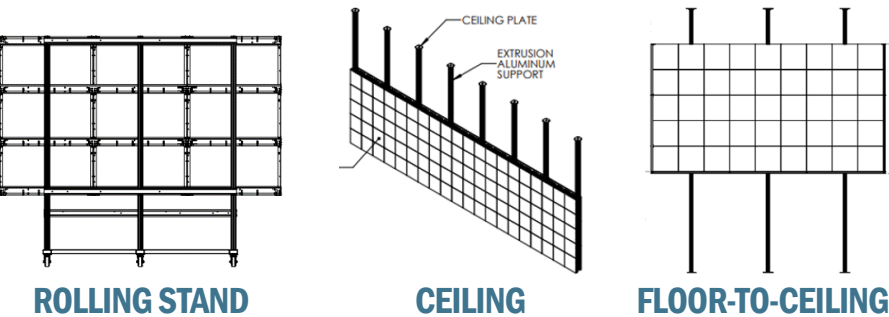
DIRECTVIEW LED  
CONVERGENT

- XYZ

ADJUSTABILITY POINTS FOR PERFECT X-Y-Z PLANE ALIGNMENT AND BETTER ACCESS TO MOUNTING HOLES
- LIGHTWEIGHT DESIGN
- CLADDING AVAILABLE
- EFFICIENT INSTALLATION
- MANUFACTURED IN THE USA

## FLEXIBILITY

In addition to wall mounting, Premier Mounts can support a variety of mounting configurations.



DIRECTVIEW LED | CONVERGENT



Modular design in a bracket wall system allows for video wall construction of unlimited scalability in both height and width. Modular design also allows for installation in any space!

Convergent's X-Y-Z Plane Adjustment makes installation and alignment quick and efficient making it a top solution for front serviceable LED displays.

MODEL NAME	PM PART NUMBER	COMPATIBLE DISPLAYS
THE WALL (PRO)	SAM-IWJ	IW016J / IW012J / IW008J / IW008J-R / IW012J-R / IW016J-R
IER SERIES / IFR SERIES / IEA SERIES	SAM-IER	IE015R / IE020R / IE025R / IE040R / IF015R-E / IF020R-E / IF025R-E / IF040R-E / IE020A / IE025A / IE040A / IE015A-F / IE020A-F / IE025A-F / IE040A-F
IF SERIES	SAM-IF	IFO15H / IFO20H / IFO25H / IFO15H-E / IFO20H-E / IFO25H-E
IFJ SERIES	SAM-IFJ	IFO12J, IFO12J-E



# OUTDOOR | OH SERIES

Weather any storm with our innovative, Samsung outdoor mounts! Flat and tilt options available to provide an optimal viewing experience in any weather condition. Hot, cold, wet and everything in between, we’ve got you covered.

## FEATURES OUTDOOR OH SERIES



**CORROSION RESISTANT. OUTDOOR RATED.  
FACE THE ELEMENTS.**

55  
+  
75

**FOR THE 55” AND 75” SAMSUNG OH  
SERIES DISPLAYS.**



**MADE IN THE USA.**



**SUPPORTS PORTRAIT AND  
LANDSCAPE ORIENTATION.**



**UV-RATED PAINT.**



**FLAT OR UP TO 15° OF DOWNWARD TILT PROVIDING  
OPTIMAL VIEWING EXPERIENCE.**



**BAFFLES TO MAINTAIN PROPER AIRFLOW.**



**SAMSUNG REVIEWED**



OUTDOOR | OH SERIES

55  
INCH



### OH55 FLAT WALL MOUNT

**PM PART #:** 7170-0977-00  
**COMPATIBLE DISPLAYS:**  
OH55F, OH55A



### OH55 TILT WALL MOUNT

**PM PART #:** 7170-0977-01  
**COMPATIBLE DISPLAYS:**  
OH55F, OH55A  
**ADDITIONAL FEATURES:**  
+ UP TO 15° OF DOWNWARD TILT

75  
INCH



### OH75 FLAT WALL MOUNT

**PM PART #:** 7170-0978-00  
**COMPATIBLE DISPLAYS:**  
OH75F, OH75A



### OH75 TILT WALL MOUNT

**PM PART #:** 7170-0978-01  
**COMPATIBLE DISPLAYS:**  
OH75F, OH75A  
**ADDITIONAL FEATURES:**  
+ UP TO 15° OF DOWNWARD TILT





# MOUNT UP.

As we do with all our products, we design our mounts with your peace of mind, in our mind. Whether you're in the classroom or a sports facility, Premier Mounts helps create an optimal experience for educators and students.

## QUESTIONS OR NEED MORE INFORMATION? NO PROBLEM, WE'RE HERE TO HELP!

Call us at **1.800.368.9700** or email us at **ORDERS@PREMIERMOUNTS.COM**

Visit **PREMIERMOUNTS.COM** to see our complete line of AV mounting solutions and hang with us on social media at **@PREMIERMOUNTS**



We look forward to hanging with you and MOUNT UP.

### PREMIER MOUNTS

500 W Central Ave, Suite A  
Brea, CA 92821

