



# INSTALLATION INSTRUCTIONS

## Product

7160-1627 / 7170-0884-XX  
- 2021+ Dodge Durango Console widebody

7170-0885-XX  
-2021+ Dodge Durango Console with Internal Printer Mount

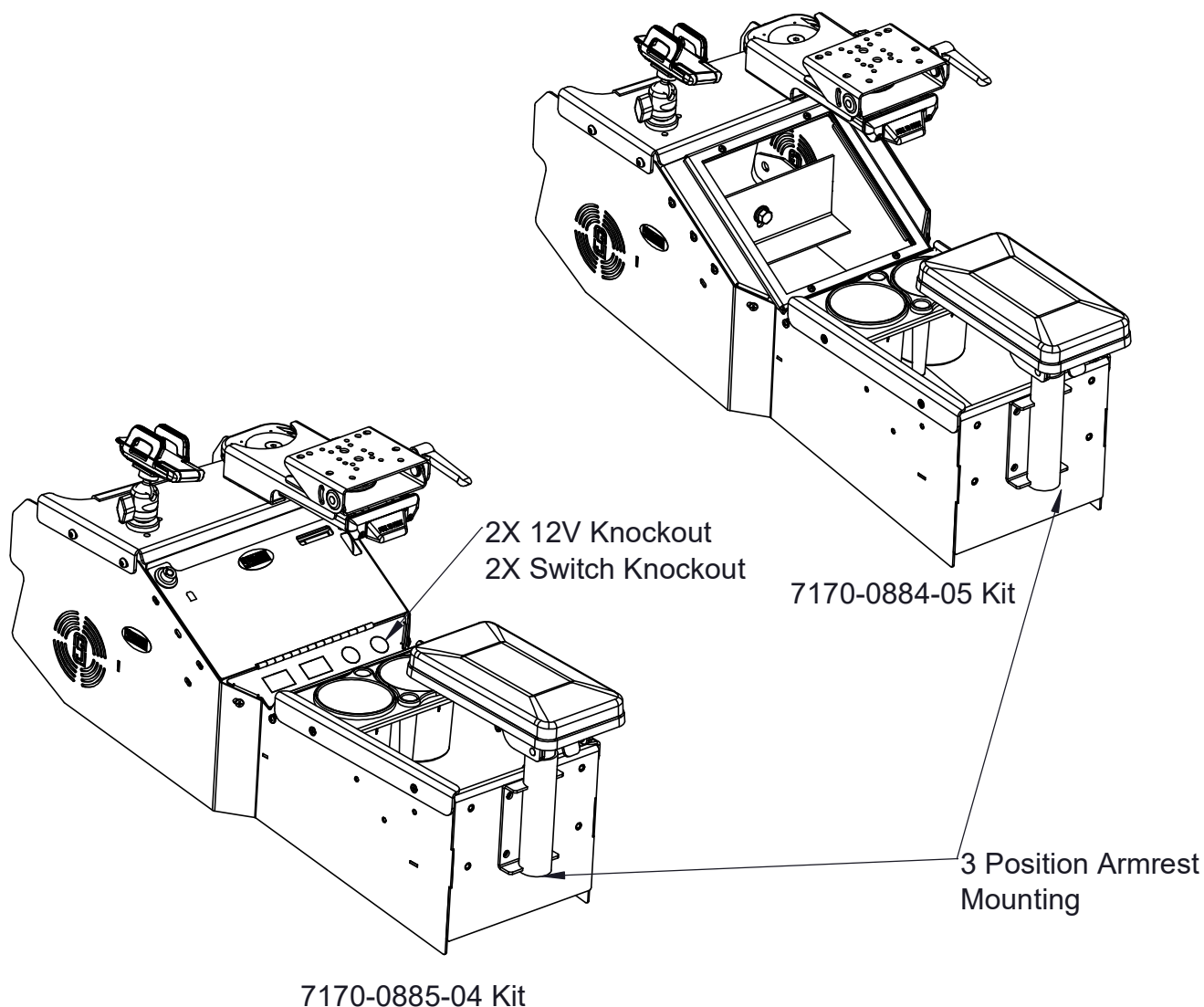
## Revision

A

## Form

INST-1049

Printing Spec: PS-005



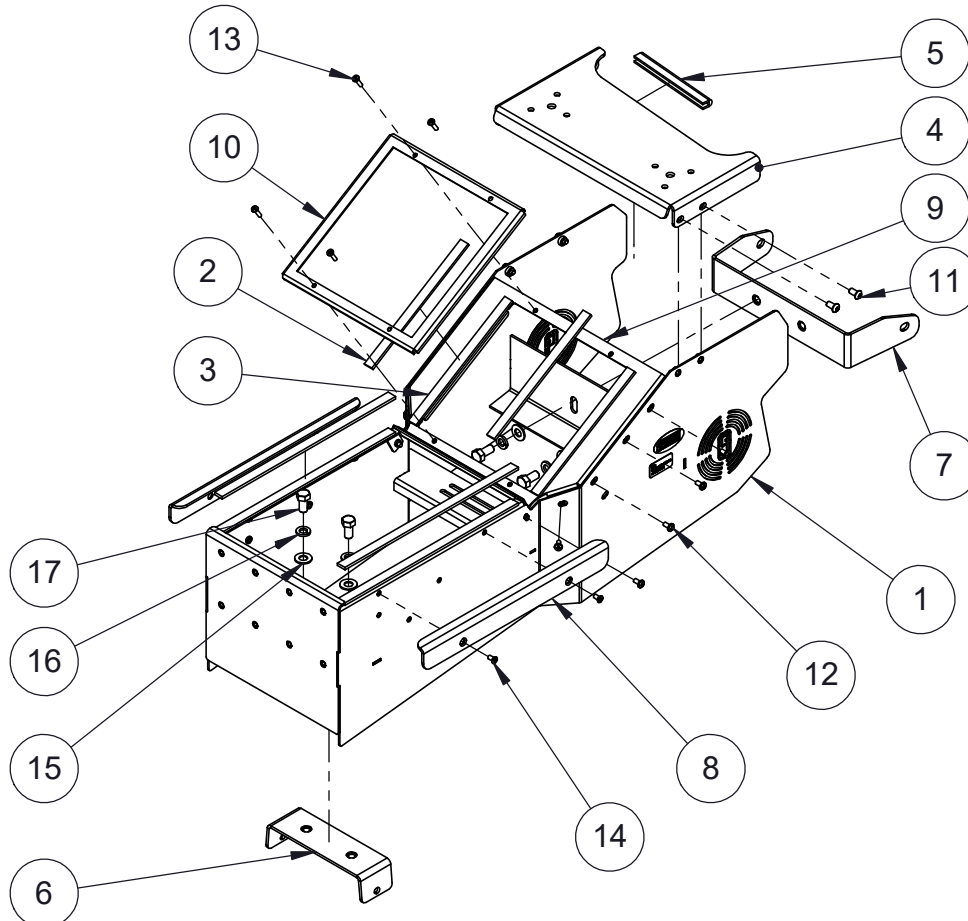
### Product Mounting Disclaimer

Gamber-Johnson is not liable under any theory of contract or tort law for any loss, damage, personal injury, special, incidental or consequential damages for personal injury or other damage of any nature arising directly or indirectly as a result of the improper installation or use of its products in vehicle or any other application. In order to safely install and use Gamber-Johnson products full consideration of vehicle occupants, vehicle systems (i.e., the location of fuel lines, brake lines, electrical, drive train or other systems), air-bags and other safety equipment is required. Gamber-Johnson specifically disclaims any responsibility for the improper use or installation of its products not consistent with original vehicle manufactures specifications and recommendations, Gamber-Johnson product instruction sheets, or workmanship standards as endorsed through the Gamber-Johnson Certified Installer Program.

© Copyright 2021 Gamber-Johnson, LLC

If you need assistance or have questions, call Gamber-Johnson at 1-800-456-6868

ITEM	QTY	PartNo	DESCRIPTION
1	1	19999	CONSOLE - 2021+ DODGE DURANGO CONSOLE WIDE OPTION
2	-	9000-0043	DUAL LOCK - .50 WIDE BLACK,HIGH DEN SIDE
3	-	9000-0046	DUAL LOCK - .50 WIDE BLACK,LOW DEN SIDE
4	1	20002	TOP PLATE - 2021+ DODGE DURANGO PRINTER CONSOLE
5	1	14500	RUBBER EDGE TRIM - 3/16 GAP one roll equals 500 ft
6	1	20003	PLATE - 2021+ DURANGO CONSOLE REAR LEG
7	1	20004	FRONT LEG - 2021+ DODGE DURANGO CONSOLE
8	2	12991	HOLDDOWN 12.25"
9	1	19248	PLATE - 2021+ DODGE DURANGO CONSOLE EQUIPMENT PLATE (PRINTER OPTION)
10	1	20009	HOLDDOWN - 7.5" MOUNT FRAME
11	4	12305-0001	1/4-20 x .500 SBHS-NP FS-014
12	10	1122-1006	#10-32 X .375 PPHMS -FS-014
13	4	10796-0001	#8-32 X .625 PPHMS -FS-014
14	4	10016-0002	#10-32 X .375 82° PFHMS -FS-014
15	4	3130-0052	3/8 Flat Washer -FS-014
16	4	3130-0424	3/8 SPRING LOCK WASHER -FS-015
17	4	1173-3812	3/8-16 X .75 HHCS FS-014



Internal Printer kit PN:  
7160-1661

# Install

1. Remove OEM Center plate with 10mm socket, 2 bolts in front under the center dash and 2 in the back. (for the back bolts, its easier to slide the seat forward to gain better access). Keep OEM bolt as needed to install GJ console.



Fig. 1

2. With OEM Center plate removed, install the GJ console Front leg and rear leg to the OEM mounting location.



Fig. 2

3. With the Legs attached to the vehicle place the GJ console between the seats and attach to legs with provided 3/8-16 hardware



Fig. 3



4. check all bolts are tighten down and console install is complete.



Note- Both versions of the console can be easily converted from Printer mount to equipment mounting or vice versa without changing the entire console.

Contact your Sales Representative or call 1800-456-6868 for more information.