



# INSTALLATION INSTRUCTIONS

**Product**

7160-0882

Dell Latitude Rugged Laptop Docking Station

**Revision**

Rev. F

**Form**

INST-775

Printing Spec: PS-001

This instruction sheet is for the Dell Rugged Laptop docking station only. For instructions on features, set-up, and operation of the Dell Rugged computer, please refer to the manual provided by Dell with the computer.

This docking station works with

1. Dell 12" Latitude Rugged Extreme 2-in-1 Laptop
2. Dell 14" Rugged Laptop
3. Dell 14" Rugged Extreme Laptop
4. Dell 14" Rugged Extreme Business Laptop

See page 4 for set-up instructions.

This instruction sheet is for the following products:

**Item No. 7160-0882-00** Dock - Dell Rugged Laptop No RF

**Item No. 7160-0882-03** Dock - Dell Rugged Laptop Tri RF

Gamber Johnson recommends the following power supply to power the docking station. They can be ordered from Gamber-Johnson seperatley.

7300-0468 - Auto (11-16 Vdc Input) - Available with the docking station as KIT

**7170-0551-00** (Non-RF) and **7170-0551-03** (Tri-RF)



**Note:** \*Use the hardware provided in the hardware bag for attaching the dock to the mounting surface.

**Product Mounting Disclaimer**

Gamber-Johnson is not liable under any theory of contract or tort law for any loss, damage, personal injury, special, incidental or consequential damages for personal injury or other damage of any nature arising directly or indirectly as a result of the improper installation or use of its products in vehicle or any other application. In order to safely install and use Gamber-Johnson products full consideration of vehicle occupants, vehicle systems (i.e., the location of fuel lines, brakes lines, electrical, drive train or other systems), air-bags and other safety equipment is required. Gamber-Johnson specifically disclaims any responsibility for the improper use or installation of its products not consistent with the original vehicle manufactures specifications and recommendations, Gamber-Johnson product instruction sheets, or workmanship standards as endorsed through the Gamber-Johnson Certified Installer Program.

© copyright 2020 Gamber-Johnson, LLC

If you need assistance or have questions, call Gamber-Johnson at 1-800-456-6868

# PRE-INSTALLATION RECOMMENDATIONS

## Conduct a "Bench Test"

Gamber-Johnson strongly advises a "bench test" be conducted to verify all electronic and software issues are resolved prior to installation:

1. Make sure the computer is operational by itself.
2. Insert computer into the docking station and verify that the computer is operating in the dock.
3. Interconnect entire assembly and verify start-up of all components, including other equipment (printers, modems, scanners, etc.)

*Gamber-Johnson recommends positioning of all mounts and equipment in the vehicle prior to the actual install to verify that mounting locations are safe and practical.*

## IMPORTANT SAFETY INFORMATION FOR INSTALLERS

Safety is dependent on the proper installation and servicing of this docking station. It is important to read and follow all instructions before installing this product.

To properly install a Gamber-Johnson docking station you must have a good understanding of automotive electrical procedures and systems, along with proficiency in the installation and service of aftermarket vehicle equipment.

There are no adjustments required at any time of the electrical components within the docking station. **Opening the docking station will void the product warranty.**

### During Installation:

**DO NOT** connect this docking station to the vehicle battery until:

1. All other electrical connections are made
2. Mounting of all components is complete
3. Verification that no shorts exist in the entire system

**DO NOT** install equipment or route wiring or cords in the deployment path of any air bag.

When drilling into the vehicle, DO make sure that both sides of the surface are clear of anything that could be damaged.

**CAUTION:** *If wiring is shorted to the frame, high current conductors can cause hazardous sparks resulting in electrical fires or flying molten metal.*

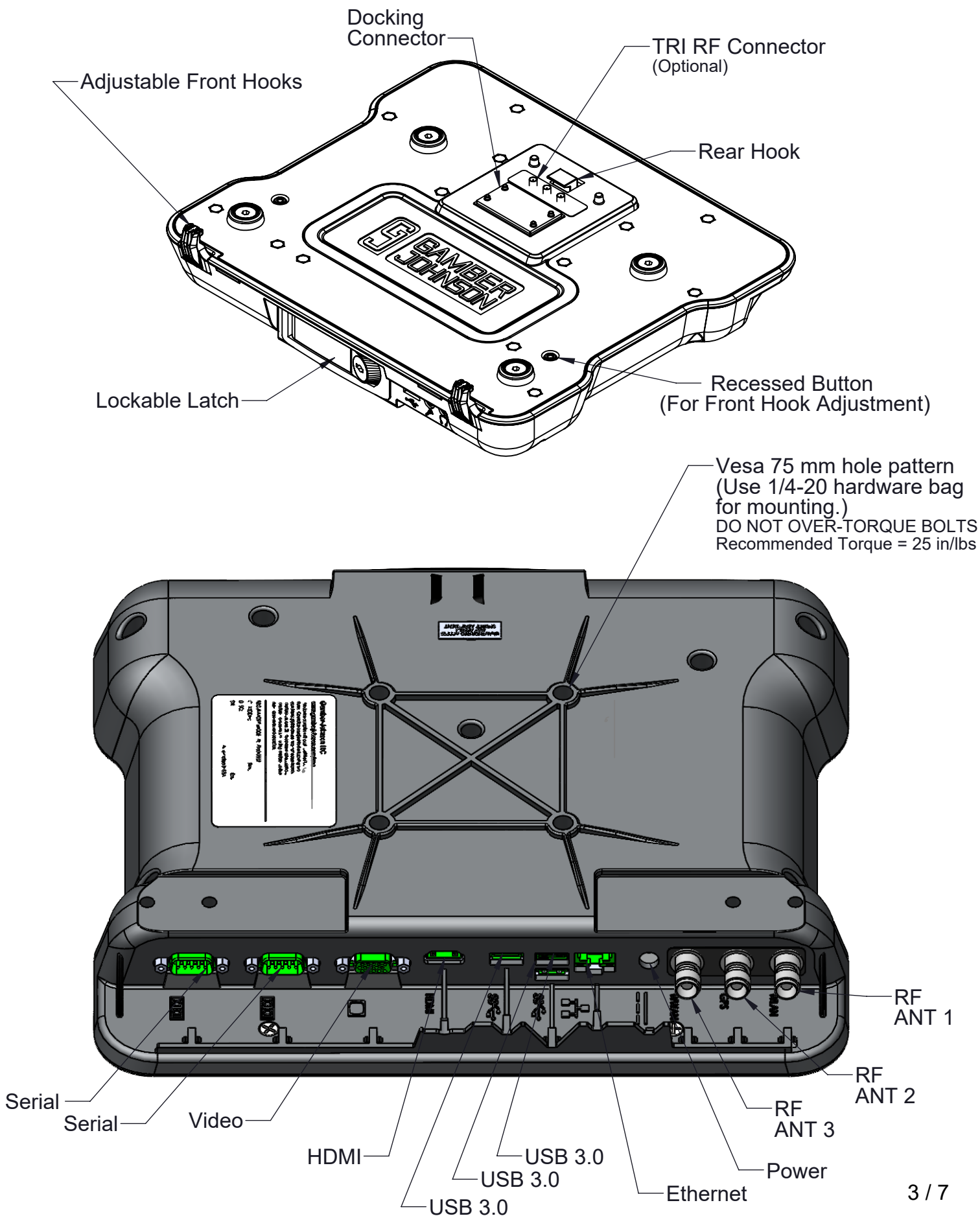
### After installation:

Test the docking station to ensure that it is working properly.

File these instructions in a safe place and refer to them when performing maintenance or re-installing.

**WARNING:** *Failure to follow all safety precautions and instructions may result in property damage, serious injury, or death.*

# DELL RUGGED DOCKING STATION FEATURE IDENTIFICATION



# DELL RUGGED DOCKING STATION ADJUSTABILITY

This docking station works with

1. Dell 12" Latitude Rugged Extreme Convertible Laptop
2. Dell 14" Rugged Laptop
3. Dell 14" Rugged Extreme Laptop
4. Dell 14" Rugged Extreme Business Laptop

Follow the instructions below to adjust the front hooks to accomdate the laptop.

## Latitude 7214 - 12" Rugged Extreme Convertible Laptop

Hook  
Setting 1



1. Press & hold recessed  
button down  
(Use any pointed tool)

2. Move hooks to appropriate  
location

3. Release button

## Latitude 5404, 5414, 5420, 5424, 7204 - 14" Rugged Laptop

Hook  
Setting 2



Note: Verify that the button  
returns to being flush with the  
metal plate after set-up.

This ensures locking of the  
hooks.

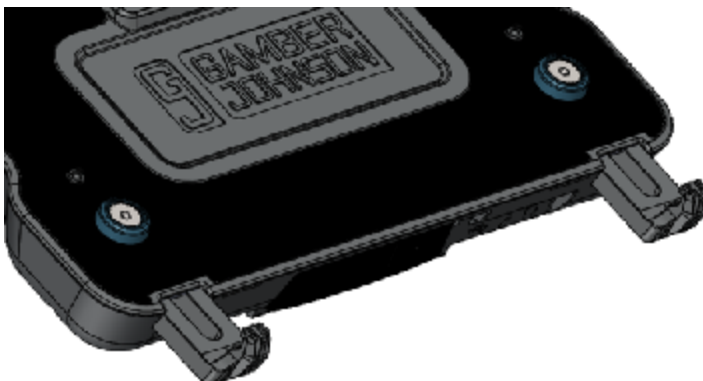
## Latitude 7424 - 14" Rugged Extreme Laptop

Hook  
Setting 3



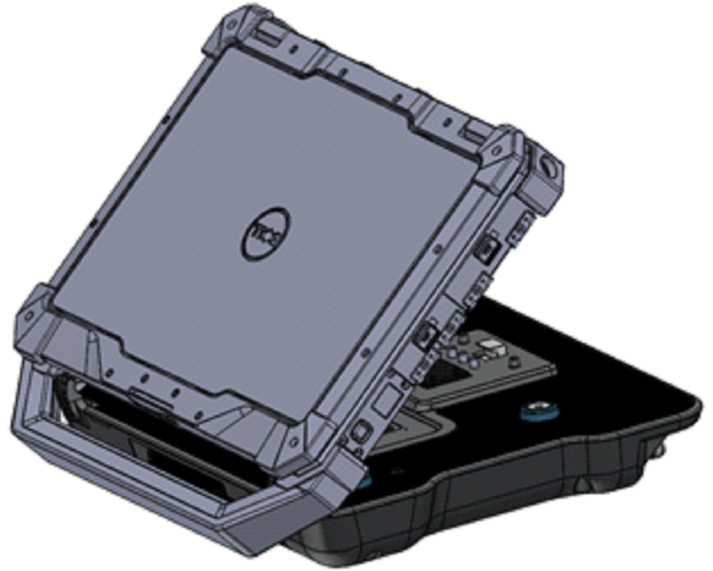
## Latitude 7404, 7414 - 14" Rugged Extreme Business Laptop

Hook  
Setting 4



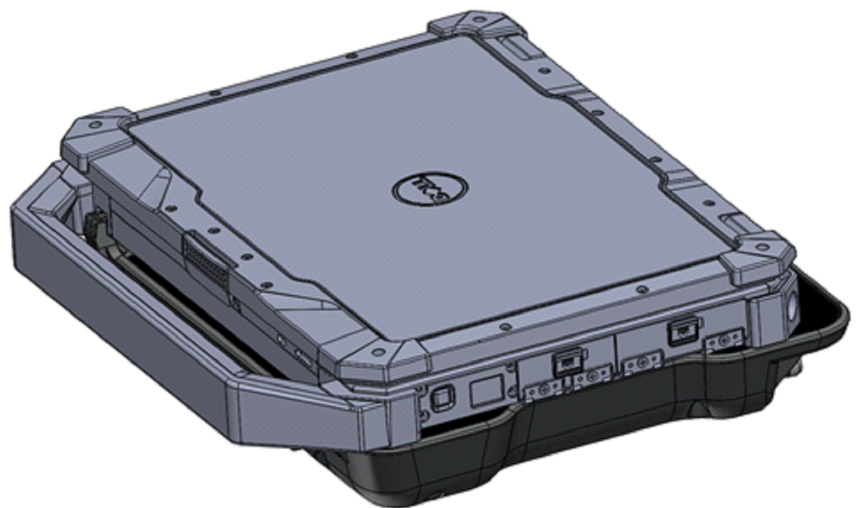
# DOCKING THE COMPUTER

1. If the dock is in the closed position, push the latch button to open the latch.
2. Insert the front of the DELL laptop under the front hooks on the dock, such that the tabs on hook goes into the pockets of the laptop. Look at the handle to make sure the front of the computer is centered on the front hooks.
3. Lower the back of the laptop down onto the dock and the docking connector.
4. **Lightly press down on the back of the laptop (center) to ensure it is fully seated** while closing the latch.
5. The rear hook will engage the back of the computer to hold it in place.



## **TO UNDOCK THE COMPUTER**

1. Press the Latch Button. The front latch is spring loaded and will automatically open.  
**Lightly press down on the back of the computer (center)** and the rear hook will retract from the laptop.
2. Lift the back of the laptop off the dock and docking connector.
3. Pull the front of the laptop out from under the front hooks.



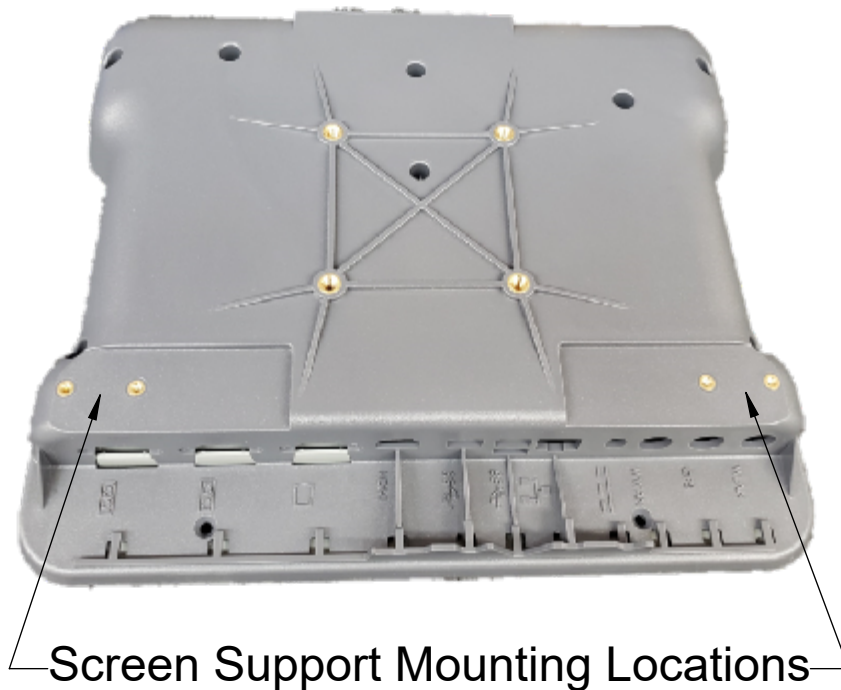


# Screen Support Installation

Screen supports are recommended on all laptop dock/cradles in high-vibration environments.

Screen support can be purchased from [www.GamberJohnson.com](http://www.GamberJohnson.com)

**Part Number: 7110-1213**



Use #6-32 screws from screen support hardware bag to attach screen support to the left or right mounting location, do not over-torque screws.

Reccomended torque is 8-11 in/lbs.



## Regulatory Certification Information

Regulatory Model #: 7160-0882

GJ Model #'s & Description:

7160-0882-00	Dock - DELL RUGGED LATITUDE LAPTOP - NO RF
7160-0882-03	Dock - DELL RUGGED LATITUDE LAPTOP - TRI RF

### Certifications:

- EN 55032: 2012/AC: 2013 Class A
- EN 50498:2010
- EN 50581:2012

This device complies with Part 15 of the FCC Rules. Operation is subject to the following two conditions. (1) this device may not cause harmful interference, and (2) this device must accept any interference received, including interference that may cause undesired operation.



Gamber-Johnson LLC, 3001 Borham Ave., Stevens  
Point, WI, 54481, USA, 715-344-3482