



INSTALLATION INSTRUCTIONS

Product

7160-1376

PASSENGER PARTITION- 2020+ UTILITY

Revision

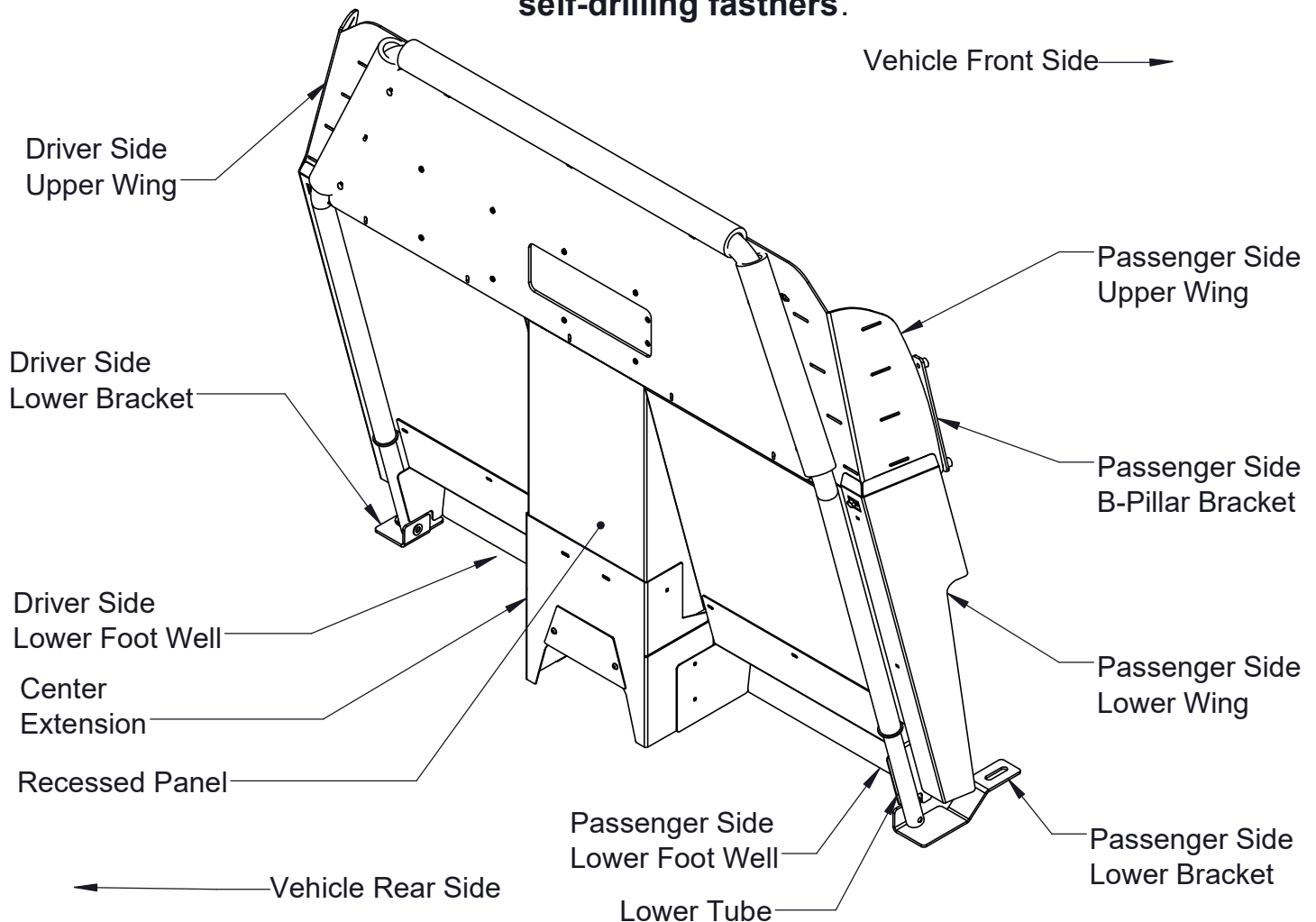
Rev D

Form

INST-930

Printing Spec: PS-005

WARNING: Locate all wiring, fuel lines, brake lines, coolant lines & refrigerant lines before drilling any holes or installing any self-drilling fasteners.



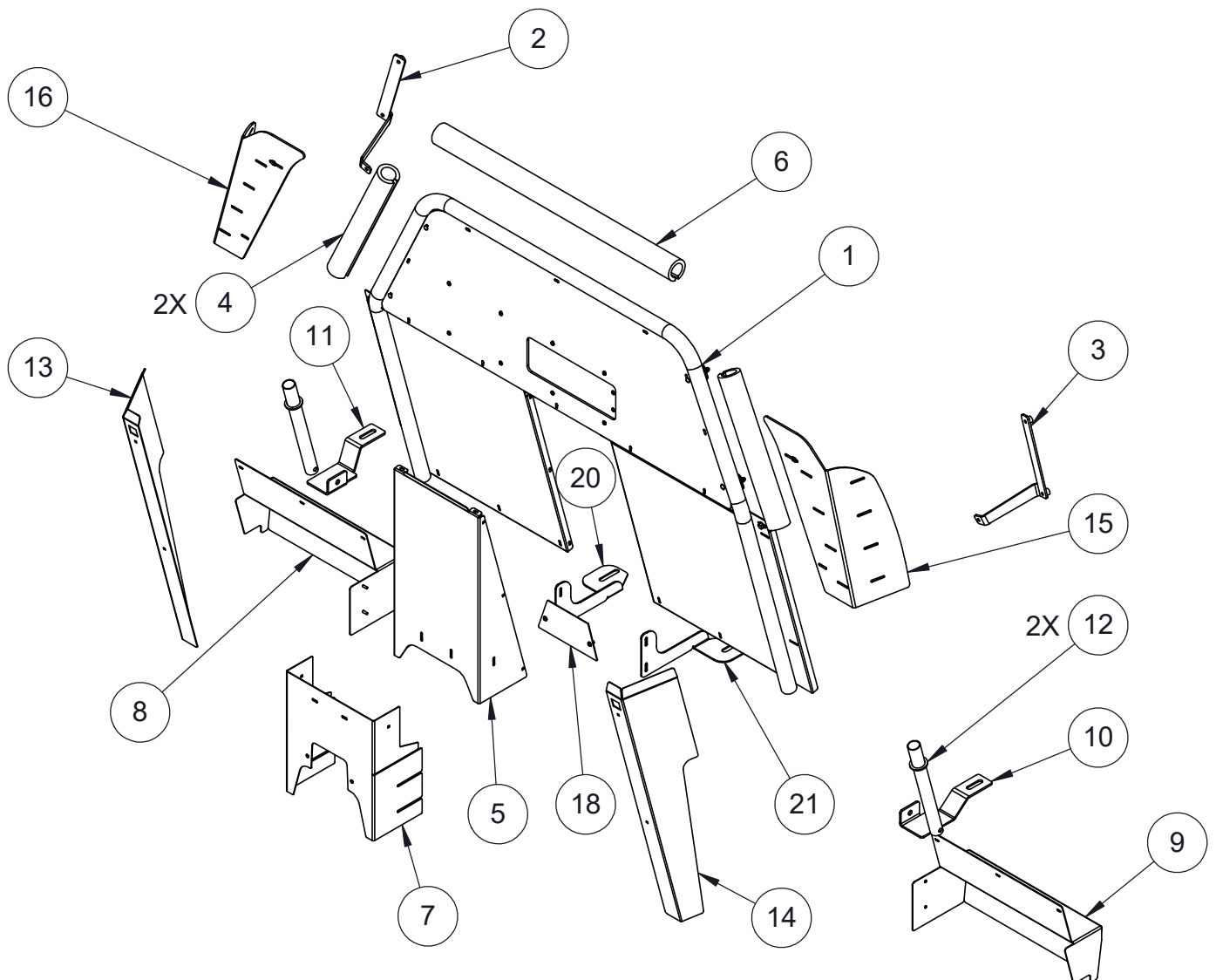
Product Mounting Disclaimer

Gamber-Johnson is not liable under any theory of contract or tort law for any loss, damage, personal injury, special, incidental or consequential damages for personal injury or other damage of any nature arising directly or indirectly as a result of the improper installation or use of its products in vehicle or any other application. In order to safely install and use Gamber-Johnson products full consideration of vehicle occupants, vehicle systems (i.e., the location of fuel lines, brake lines, electrical, drive train or other systems), air-bags and other safety equipment is required. Gamber-Johnson specifically disclaims any responsibility for the improper use or installation of its products not consistent with original vehicle manufactures specifications and recommendations, Gamber-Johnson product instruction sheets, or workmanship standards as endorsed through the Gamber-Johnson Certified Installer Program.

© Copyright 2020 Gamber-Johnson, LLC

If you need assistance or have questions, call Gamber-Johnson at 1-800-456-6868

ITEM	QTY	PART NO	DESCRIPTION
1	1	17631	MAIN FRAME
2	1	19653	DRIVER SIDE B-PILLAR BRACKET
3	1	19688	PASSENGER SIDE B-PILLAR BRACKET
4	2	17762	SIDE PADDING 16"
5	1	18323	RECESSED PANEL
6	1	18737	UPPER PADDING 32"
7	1	18803	CENTER EXTENSION
8	1	18807	DRIVER SIDE FOOT WELL
9	1	18809	PASSENGER SIDE FOOT WELL
10	1	18819	PASSENGER SIDE LOWER BRACKET
11	1	18820	DRIVER SIDE LOWER BRACKET
12	2	18794	LOWER TUBE
13	1	19131	DRIVER SIDE LOWER WING
14	1	19132	PASSENGER SIDE LOWER WING
15	1	19157	PASSENGER SIDE UPPER WING
16	1	19158	DRIVER SIDE UPPER WING
17	1	7120-0928	HARDWARE BAG
18	1	19890	PLATE - 2020 FORD PIU WIRE TUNNEL COVER
19	2	12305-0001	1/4-20 x .500 SBHS-NP FS-014
20	1	19100	BRACKET - DRIVER SIDE PARTITION SUPPORT
21	1	19101	BRACKET - PARTITION SUPPORT PASSENGER SIDE



1) Slide & lean front driver & passenger seats forward.

2) Using 13mm socket, remove both rear seat bolts from each seat then slide Passenger & Driver side lower brackets (item#10 & 11) underneath the seat track. Then install 2 inner partition bracket in the inner seat bolts. (Item #20 & #21, the 2 vertical slot will mount to the partition) Loosely reinstall the mounting bolts (Fig.2),

3) Loosely mount Lower tube (item#12) to each of the passenger & driver side lower brackets (item#10 & 11) using 3/8 hardware. (Fig.1 & Fig.2)

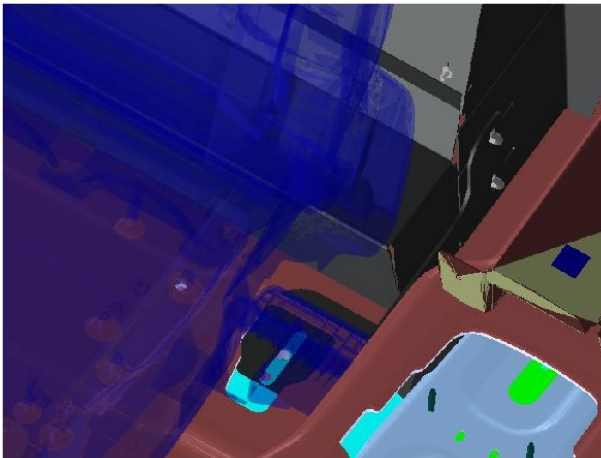
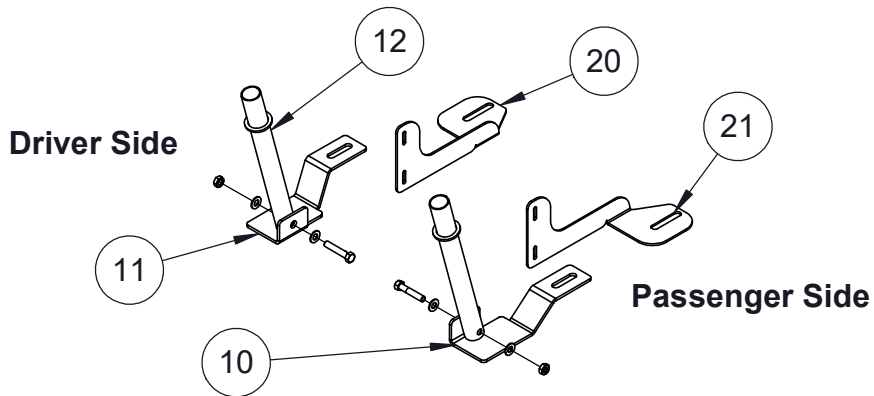


Fig.1

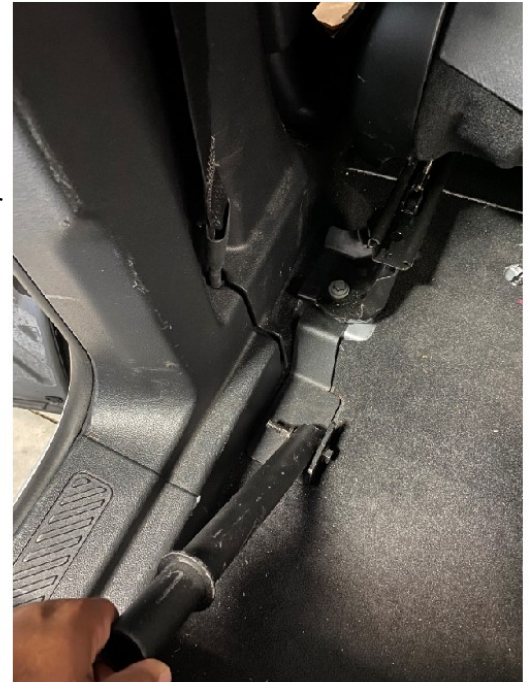


Fig.2
Driver Side Shown

4) Remove cover on rear grab handle (Fig 3.) Using 10mm socket, remove 2 bolts on each side on the driver and passenger side.



Fig.3
Driver Side Shown

5) Attach Driver Side B-Pillar bracket (item#2) on driver side to grab handle exposed holes, using OEM bolts. Repeat same step on passenger side with Passenger Side B-Pillar bracket (item#3)(Fig.4)



Fig.4 Driver Side Shown



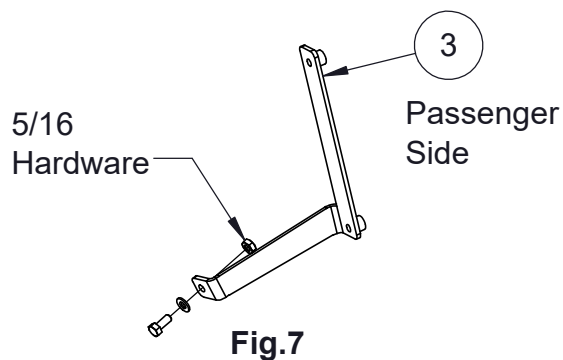
**Fig.5 Knob facing towards officer
Viewing from passenger side**

6) Insert Main Frame (item#1) into vehicle with sliding window knob facing toward front seats. Align Main Frame (item#1) with Lower tube (item#12) & lower it onto them. (Fig.5)

7)Tilt partition forward & loosely attach to B-Pillar brackets (item#2 & 3) using 5/16 hardware (Bolt,Washer & Nut) to Main frame (Item#1)(Fig.6 & 7).



**Fig.6
Driver Side Shown**

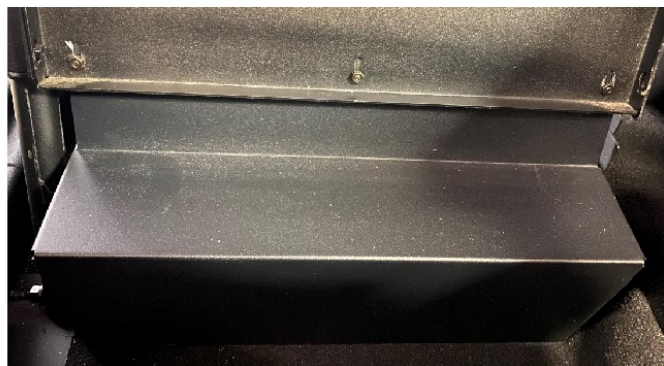
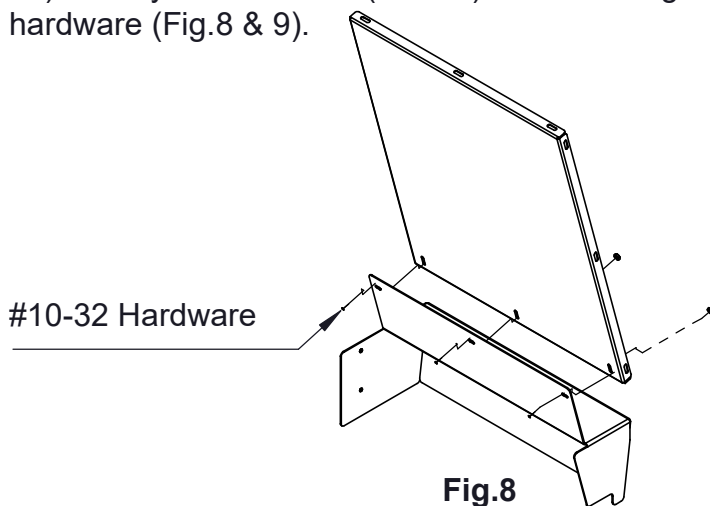


8) Attach foam padding 16" (item#4) on the sides of main frame (item#1) & 32" padding (item#6) on top of main frame (item#1).

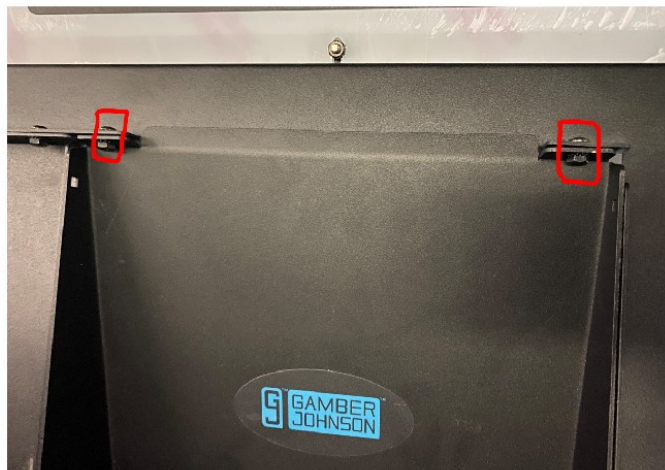
9) Ensure partition is centered within vehicle & mitigate any gap between vehicle headliner & upper partition frame.

10) Fully tighten rear seat bolts, B-Pillar brackets (item#2 & 3) and lower tube (item#12) hardware to secure partition position.

11) Loosely attach Driver (item#8) and Passenger foot well (item#9) to flat panels using #10-32 hardware (Fig.8 & 9).



12) Attach recessed panel (item#5) to main frame (item#1). First install top two bolts & this will make it easy to install rest of bolts. Use #10-32 hardware supplied. (Fig.10)



NOTE: CENTER EXTENSION HAS LASER KNOCK-OUT FOR OEM WIRECHASE TUNNEL IF REQUIRED.

13) Slide the center extension (item#7) such that studs on both Driver & Passenger Footwells (item#8 & 9) align with slots on center extension (item#7) and inner partition bracket (#20 & #21). Loosely attach center extension (item#7) to recessed panel (item#5) (Fig.11)

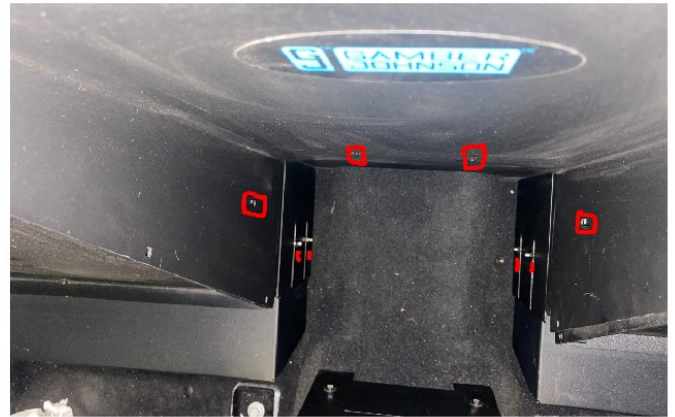


Fig.11 Viewing from top

14) Finalize adjustments & tighten Center Extension (item#7). Fully tighten all hardware.(Fig.11)

15) Install Lower Wings (item# 13 & 14) using #10-32 carriage bolts and nuts. Ensure they are adjusted to minimize gaps along B-Pillars trim (Fig.12).



Fig.12 Viewing from Driver Side

16) Attach Upper Wings (item# 15 & 16) to Upper Wings bracket using #10-32 hardware, use washer. Make use of slots to close gap between upper wings & vehicle trim.(Fig.13)

17) At upper wings, center extension & footwells, use cap nuts (Fig.14) supplied to avoid injuries.

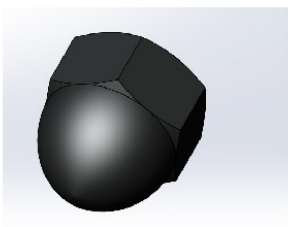


Fig.14 Cap Nut



Fig.13 Viewing from Driver Side