



DELL
MATERIAL
HANDLING

RUGGED. RELIABLE. RESPONSIVE.™

SECURE YOUR ASSETS WITH A NAME YOU CAN TRUST

Gamber-Johnson is the global leader in equipment mounting products — driven by our mission of “*supporting technology to help save the world.*” We manufacture components and systems for every mounting solution, all meticulously designed to be **rugged, reliable, and responsive**. Gamber-Johnson is a trusted name in the industry; long known as the go-to partner for major rugged computer OEMs. As a pioneer in design innovation — receiving numerous awards and accolades as an industry leader — Gamber-Johnson has been the preferred choice for decades.

HARNESS THE POWER OF GAMBER-JOHNSON'S LASER-LIKE FOCUS ON INNOVATION WITH THE PERFECT MOUNTING SOLUTION FOR YOUR LIFT VEHICLE.





MOUNTING SOLUTIONS FOR EVERY LIFT VEHICLE

Secure your tablets and equipment with our superior mounting solutions, for ultimate peace of mind. We offer a wide range of turnkey solutions that are configurable for your material handling vehicle's specific make and model. Our ergonomic solutions enhance driver efficiency, reduce installation time, speed up operations, and improve overall workplace safety. To narrow down the best solution for your fleet begin by asking yourself these four important questions:

1. WHAT DEVICE IS BEING MOUNTED?

Identifying your device ensures that you get the correct dock or cradle to support your specific need and desired connectivity.

2. WHAT MODEL VEHICLE IS THE DEVICE BEING MOUNTED TO?

Knowing the make and model of your vehicle will allow us to recommend the best location and corresponding product needed to mount your device.

3. WHAT IS THE VEHICLE'S VOLTAGE?

By knowing the voltage or power requirement of your lift vehicle we can ensure that you get the appropriate power supply for your specific need.

4. WHAT ACCESSORIES ARE BEING MOUNTED?

Understanding your accessory needs will allow us to build the best material handling solution for your team.





GAMBER-JOHNSON
**CRADLES AND
DOCKING STATIONS**



CRADLES & DOCKING STATIONS

Secure your tablets and other devices with a Gamber-Johnson cradle or docking station. Cradles keep your device safe and secure without port access, while docking stations replicate the device's ports for easy and secure access. Either way — we have a solution that will meet your needs in the most secure, ergonomic configuration possible.

DELL 12 RUGGED EXTREME



LATITUDE 12 RUGGED TABLET VEHICLE DOCK

ITEM NUMBERS:

7160-0840-00 Docking Station, No RF
7160-0840-02 Docking Station, Dual RF

FEATURES:

- Cables connect on back of the dock and can be routed down the center or side
- Complete access to ports and power supply input when the tablet is mounted
- Dual "Slam & Lock" technology for easy docking
- Use the tablet stylus and card reader/scanner while the tablet is docked
- The stylus lanyard, even when placed between the dock and tablet, won't interfere with the tablet's connectivity when docked
- Guide walls on the bottom of the dock ensure proper connection when docking the tablet
- VESA 75mm mounting pattern
- Optional keyed lock for theft deterrence
- Optional RF for WiFi and cellular
- Additional USB 2.0 and mic/AUX ports on front of the dock
- Steel and composite design for reduced weight
- Rugged construction for long-term durability
- 3-Year Limited Warranty



PMT LATITUDE 12 RUGGED TABLET VEHICLE DOCK

ITEM NUMBERS:

AS7.D920.100 NO RF
AS7.D920.102 DUAL RF
AS7.D920.104 No Electronics Cradle

FEATURES:

- Top-facing I/O ports: VGA, Display, USB 3.0 (3), Ethernet, speaker/mic
- Easy access to front-mounted key lock, USB 2.0 and audio port
- Integrated cable restraint / cable management system
- Optional RF for WiFi and cellular
- Extreme compact size preserves cabin space and ensures user safety
- CNC machined aluminum construction
- Features OEM Dell electronics
- Auto-latch mechanism ensures tablet is latched when docked
- Compatible with tablets containing the kickstand and extended I/O modules
- Flexible non-capture locking mechanism allows use with or without a key
- Allows easy access to the tablet's built-in stylus
- Available in no-electronics cradle version
- 3-Year Limited Warranty



GAMBER-JOHNSON

OVERHEAD GUARD LEG MOUNTS

CLAM SHELLS

Our Clam Shell line is Gamber-Johnson's staple product when it comes to extending the usability of technology into the mobile world of material handling. Easily attach any device, dock, cradle, or interface plate with the multiple hole patterns featured on the product. Our Clam Shells work to tailor to individual operator comfort and safety by providing a wide range of adjustments for optimal viewing of a device, improved visibility, and proximity to the operator.



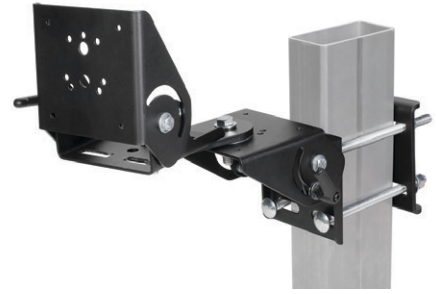
7160-0357
Clam Shell with Small Backer Plate

7160-0370
Clam Shell with Large Backer Plate



7160-0366
Dual Clam Shell with Small Backer Plate

7160-0367
Dual Clam Shell with Large Backer Plate



7160-0420
Dual Clam Shell with Arm and Small Backer Plate

7160-0421
Dual Clam Shell with Arm and Large Backer Plate

ROLL FORM BRACKETS

We have the ideal products for every mounting situation; including lift vehicles that have roll formed overhead guard legs. These brackets conform perfectly to various roll formed profiles ultimately creating a solid foundation to adapt our Clam Shell product line.



7160-0418
For Yale/Hyster, Crown, Clark and others

7160-0814
For Jungheinrich / CAT / Toyota

7160-0815
For Linde Models EV-30 and EV40

Zirkona DIAMOND PLATE MOUNTS

When it comes to mounting lightweight devices turn to Gamber-Johnson's diamond plate mounts for a reliable solution. Multiple product offerings to interface your device with various hole patterns and ample adjustability to accommodate operator comfort and ease of use.



7160-1466
Zirkona 4" Diamond Mount with 6" Medium Dog-Bone and AMPs Plate

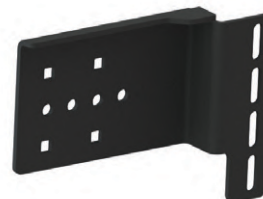
7160-1466-01
Zirkona 4" Diamond Mount with 6" Medium Dog-Bone and VESA 75mm Plate

CAB MOUNTS

Secure your valuable tablets and devices right in the cab of your material handling vehicle using one of our reliable OEM specific mounts. Perfectly suited to tailor your workspace to the most efficient, ergonomic, and secure configuration, all while protecting your valuable assets and lift vehicle operators.



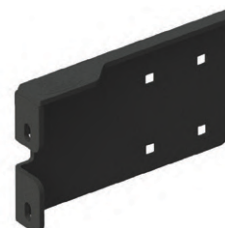
7160-1151
Toyota Cab Latch Mount
for Electronic Hydraulics



7160-1233
Toyota Cab Mount



7160-1096
Clamp Bracket Adapter



7160-1103
Linde E30 Latch Mounting Bracket



7160-1278
Yale Hyster 40/70 Cab Mount



7160-1109
Yale/Hyster Electric Bracket

HORIZONTAL EXTENSION

Increase your usable mounting space with our horizontal extension giving you more room to mount a total solution. Compatible with all Gamber-Johnson's roll formed and tube clamp brackets to ensure secure fitment to any overhead guard leg profile.



7160-0363
Horizontal Extension Bar

TUBE CLAMP MOUNTS

Expand your mounting location options by connecting your solution to multiple sizes of cylindrical poles, handles, or tubular style overhead guard legs. Adapt a Clam Shell product to finalize the total solution.



7160-0561
2", 2.5", 3" Diameter Tube Clamp



7160-1356-01
Zirkona 2" to 3" Pole Mount with VESA 75mm Mounting Plate

7160-1356
Zirkona 2" to 3" Pole Mount with AMPS/NEC Mounting Plate



7160-1367-01
Zirkona 3/4" to 1 7/8" Pole Mount with VESA 75mm Mounting Plate

7160-1367
Zirkona 3/4" to 1-7/8" Pole Mount with AMPS/NEC Mounting Plate





GAMBER-JOHNSON
**OVERHEAD GUARD
MOUNTS**



OVERHEAD GUARD MOUNTS

Increase your operator's forward visibility by tucking your device up and out of the way. Directly mount from the overhead guard using various ergonomic options that best fit a wide variety of operator needs and preferences.



7160-1156
Short Overhead Bar Mount



7160-1156-01
Tall Overhead Bar Mount



7160-0368
Overhead Guard Mount with
Single Clam Shell



7160-0856
Vertical
Extension Bar



GAMBER-JOHNSON
PERIPHERAL MOUNTS



POWER SUPPLIES, WIRING KITS & MOUNTS

Protect and power your valuable devices by pairing them with a clean, stable power source to guarantee functionality and longevity. Combine with a Gamber-Johnson Wiring Kit and Power Supply Mount for a professional look and quick installation.



LIND Isolated Power Supply
*See website for full assortment



7400-0009
Wiring Kit



7160-1333
Power Supply Clamp



KEYBOARD MOUNTS

Configure your keyboard for ultimate ease of use and the fastest possible access with our large selection of Keyboard Mounts. With an ergonomic angle that meets user needs, working on the keyboard in the field can be more streamlined and reliable than ever before.



7160-0799
Tablet Keyboard Mount



7160-1257
Vertical Tablet Keyboard Mount



7160-1157
Fixed Tablet Keyboard Mount



7160-0859
Number Pad Bracket



7160-1449-00
Rugged Lite Keyboard



iKey Rugged Keyboard
*See website for full assortment



HANDHELD SCANNER MOUNTS

Safeguard handheld scanners from accidental drops and catastrophic damage by housing your device with the right mount to fit your operation's needs.



7170-0788
Zirkona 4" Diamond Mount
with Scanner Pocket



7160-1389
Scanner Pocket Tablet
Mount



7160-1306
Scanner Pocket Mount
with Small Back Plate

SAFETY LIGHT MOUNTS

Mount safety lights to present a visual alert to help increase warehouse safety, minimize the risk of accidents, and improve visible awareness of approaching lift vehicles.



7160-0610
Single Light Bracket



7160-0850
TYRI Redline Light Mount

Explore our full
assortment of material
handling mounts at
GAMBERJOHNSON.COM



PRINTER MOUNTS

Continue to expand from a desk to a mobile work environment by creating a secure and accessible way to mount rugged mobile printers.



7160-1473
Zebra ZQ620 Printer Bracket



7160-0817
Zebra ZQ630/QLN420 Printer Bracket

*See website for full assortment

PROTECTIVE COVERS

Encase your device with Gamber-Johnson's patented selection of thermal and non-thermal protective covers. Designed to keep your device safe from the harsh elements in unforgiving work environments that could prematurely destroy your assets.



7160-0949 - 8" Protective Cover
7160-0950 - 10" Protective Cover
7160-0981 - 8" Thermal Protective Cover
7160-0982 - 10" Thermal Protective Cover



READY TO MAKE A PURCHASE?

Find a dealer in your area:
gamberjohnson.com/FindAReseller

HAVE ADDITIONAL QUESTIONS?

Contact our experts:
sales@gamberjohnson.com



RUGGED. RELIABLE. RESPONSIVE.™