



Getac **DOCKING STATIONS**

FOR YOUR LAPTOP, TABLET, AND HANDHELD DEVICES





F110

ITEM NUMBERS:

7160-1009-00 Cradle, No Electronics
 7160-1009-03 Cradle, Tri RF
 7160-0987-00 Dock, No RF
 7160-0987-03 Dock, Tri RF
 7170-0669-00 KIT: Cradle, No Electronics, LIND Power Adapter
 7170-0669-03 KIT: Cradle, Tri RF, LIND Power Adapter
 7170-0670-00 KIT: Dock, No RF, LIND Power Adapter
 7170-0670-03 KIT: Dock, Tri RF, LIND Power Adapter

- Designed for the Getac F110 11.6 inch tablet computer
- Easy to use one-handed operation:
 - Insert bottom of computer into docking station, push top of computer against latch button until latch engages
 - To remove, push up on latch-button with thumb to disengage and pull computer out of docking station
- Downward-facing I/O ports; cable strain relief and cable management system
- Accommodates mag strip reader and hand strap without shoulder strap attachment (sold separately)
- POGO pin style docking connector for reliable docking activation
- Front bracket to align computer for ease of docking
- Composite/aluminum design for reduced weight and durability
- VESA 75mm mounting pattern
- 3-Year Limited Warranty



T800

ITEM NUMBERS:

7160-0583-00 Cradle, No Electronics
 7160-0583-03 Cradle, Tri RF
 7160-0565-00 Dock, No RF
 7160-0565-03 Dock, Tri RF
 7170-0244 KIT: Dock, No RF, LIND Power Adapter
 7170-0245 KIT: Dock, Tri RF, LIND Power Adapter

- Designed for the Getac T800 8.1 inch rugged tablet computer
- Push and Turn lock with key for theft deterrence
 - Insert computer then push down and turn lock to close and dock computer
- Access to all computer function buttons and ports while tablet is docked
- POGO pin style docking connector for easy docking activation
- Downward-facing I/O ports; cable strain relief system for easy cable management
- Accommodates SnapBack SmartCard & RFID reader and X-Hand Strap (sold separately)
- Alignment pins guide the computer for easy docking and connectivity
- Composite/aluminum design for reduced weight and durability
- VESA 75mm and Gamber-Johnson mounting patterns
- 3-Year Limited Warranty



ZX70

ITEM NUMBERS:

7160-1135-01 Cradle, Powered Charging
 7160-1135-00 Cradle, No Electronics
 7170-0686-01 KIT: Cradle, Powered Charging, Getac 12V Power Adapter (Cig)
 7170-0686-02 KIT: Cradle, Powered Charging, Getac 12V Power Adapter (Bare Wire)
 7170-0686-11 KIT: Cradle, Powered Charging, LIND 12-32V Isolated Power Adapter
 7170-0686-21 KIT: Cradle, Powered Charging, LIND 20-60V Isolated Power Adapter

- Designed for the Getac ZX70 tablet computer and backwards compatible with the Z710 tablet
- Easy to use one-handed operation:
 - Insert bottom of computer into the cradle, push top of computer against latch button until latch engages
 - To remove, push up on latch-button with thumb to disengage and pull computer out of the cradle
- Accommodates rotating hand strap (sold separately)
- POGO connector for reliable charging
- Power cable strain relief
- Access to all tablet control buttons and USB port while tablet is cradled
- Optional lock (keyed alike) for theft deterrence
- Rounded edges to enhance personal safety
- Extremely light-weight composite/aluminum design
- VESA 75mm mounting pattern
- 3-Year Limited Warranty



K120

ITEM NUMBERS:

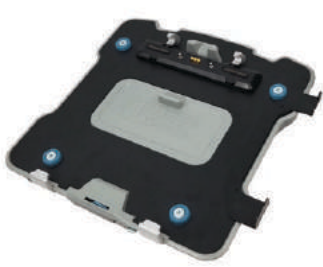
7160-1085-00 Cradle, No Electronics
 7160-1085-03 Cradle, Tri RF
 7160-1084-00 Dock, No RF
 7160-1084-03 Dock, Tri RF
 7170-0694-00 KIT: Dock, No RF, Getac Power Adapter
 7170-0694-03 KIT: Dock, Tri RF, Getac Power Adapter

- Designed for the Getac K120 12-inch fully rugged tablet
- Easy to use one-handed operation:
 - Insert bottom of computer into the docking station, push top of computer against latch button until latch engages
 - To remove, push up on latch-button with thumb to disengage and pull computer out of the docking station
- Accommodates tablet's rotating hand strap (sold separately)
- Upward-facing I/O ports; integrated cable strain relief and cable management system
- Access to all tablet control buttons and ports while tablet is docked
- Steel guide pins for proper alignment during docking
- Optional keyed lock for theft deterrence
- Rounded edges to enhance personal safety
- Gamber-Johnson rugged construction and reliability
- VESA 75mm mounting pattern
- 3-Year Limited Warranty

CERTIFICATES & TESTING:

MIL-STD 810G Shock/Vibration, SAE J1455 Crash Test, RoHS, FCC, CE, EMark, Cycle Tested - Lock & Docking Mechanism
 *See website for more certifications on each docking station





K120

ITEM NUMBERS:

7160-1083-00 Cradle, No Electronics
 7160-1083-03 Cradle, Tri RF
 7160-1082-00 Dock, No RF
 7160-1082-03 Dock, Tri RF
 7170-0693-00 KIT: Dock, No RF, Getac Power Adapter
 7170-0693-03 KIT: Dock, Tri RF, Getac Power Adapter

- Compatible with the Getac K120 computer with keyboard
- Docking Station design accommodates MSR and rotating hand strap (sold separately)
- Rear corner release button, easily remove the computer with the push of a button
- Access to all computer control buttons and ports while the computer is docked
- Forward-facing I/O ports; integrated cable strain relief and cable management system
- Floating docking connector for reliable connectivity in the most rugged environments
- Optional lock (keyed alike) for theft deterrence. When the computer is closed and screen is latched, the lock will secure the keyboard and computer
- Rounded edges to enhance personal safety
- Gamber-Johnson rugged construction and reliability
- VESA 75mm mounting pattern
- 3-Year Limited Warranty



A140

ITEM NUMBERS:

7160-1247-00 Cradle, No Electronics
 7160-1247-03 Cradle, Tri RF
 7160-1246-00 Dock, No RF
 7160-1246-03 Dock, Tri RF
 7170-0695-00 KIT: Dock, No RF, Getac Power Adapter
 7170-0695-03 KIT: Dock, Tri RF, Getac Power Adapter

- Designed for the Getac A140 14-inch fully rugged tablet computer
- Easy to use one-handed operation:
 - Insert bottom of computer into the dock, push top of computer against latch button until latch engages
 - To remove, push up on latch-button with thumb to disengage and pull computer out of the dock
- Accommodates tablet's built-in rubber hand strap, stylus, and optional multi-function hard handle (sold separately)
- Upward-facing I/O ports; integrated cable strain relief and cable management system
- Access to all tablet control buttons, ports, smart card reader and front camera while tablet is docked
- Steel guide pins for proper alignment during docking
- Optional keyed lock for theft deterrence
- Gamber-Johnson rugged construction and reliability
- Rounded edges to enhance personal safety
- VESA 75mm mounting pattern
- 3-Year Limited Warranty



RX10

ITEM NUMBERS:

7160-0792-00 Cradle, No RF
 7160-0792-03 Cradle, Tri RF
 7160-0760-00 Dock, No RF
 7160-0760-03 Dock, Tri RF
 7160-0760-04 Cart Mounted Dock, No RF
 7160-0760-05 Cart Mounted Dock, Tri RF
 7160-0880-00 RX10H Dock, No RF
 7160-0880-03 RX10H Dock, Tri RF

- Slim form factor design for applications where space is limited
- Easy to use one-handed operation:
 - Insert bottom of computer into the dock, push top of computer against latch button until latch engages
 - To remove, push up on latch-button with thumb to disengage and pull computer out of the dock
- Access to all computer's buttons, stylus and ports while docked
- Downward-facing I/O ports, cable strain relief system for easy cable management
- Accommodates barcode scanner, accessory cover, kickstand and extended battery
- POGO pin style docking connector for easy docking
- Alignment tabs prevent damage to the docking connector when docking the computer
- Composite/aluminum design for reduced weight and durability
- VESA 75mm mounting pattern
- 3-Year Limited Warranty



S410

ITEM NUMBERS:

7160-0791-00 Cradle, No RF
 7160-0791-03 Cradle, Tri RF
 7160-0790-00 Dock, No RF
 7160-0790-03 Dock, Tri RF
 7170-0538 KIT: Cradle, No RF, Getac Power Adapter
 7170-0539 KIT: Cradle, No RF, Getac Power Adapter
 7170-0536 KIT: Dock, No RF, Getac Power Adapter
 7170-0537 KIT: Dock, Tri RF, Getac Power Adapter

- Small footprint designed to maximize available space
- Plate draws back into docking station when the computer is docked
- Rear-facing I/O ports, integrated cable strain relief system, and convenient cable management system
- Rear hooks and guide pins ensure proper alignment and docking connectivity
- Spring-loaded docking connector to ensure connectivity in the roughest terrain
- Screen support included
- Composite/aluminum design for reduced weight and durability
- VESA 75mm mounting pattern
- 3-Year Limited Warranty



Getac DOCKING STATIONS

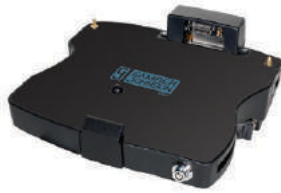


UX10

ITEM NUMBERS:

7160-1253-00 Cradle, No Electronics
7160-1253-03 Cradle, Tri RF
7160-1252-00 Dock, No RF
7160-1252-03 Dock, Tri RF
7170-0738-00 KIT: Cradle, No Electronics, Getac Power Adapter
7170-0738-03 KIT: Cradle, Tri RF, Getac Power Adapter
7170-0696-00 KIT: Dock, No RF, Getac Power Adapter
7170-0696-03 KIT: Dock, Tri RF, Getac Power Adapter

- Compatible with the Getac UX10 tablet computer
- Docking station design accommodates rotating hand strap, extended battery, hard handle, RFID reader, and smartcard reader (sold separately)
- Easy to use one-handed operation:
 - Insert bottom of computer into the docking station, push top of computer against latch button until latch engages
 - To remove, push up on latch-button with thumb to disengage and pull computer out of the docking station
- Floating POGO docking connector for reliable docking activation
- Docking tabs align tablet during insertion
- Optional keyed lock for theft deterrence
- Downward-facing I/O ports; integrated cable strain relief and cable management system
- Rounded edges to enhance personal safety
- Gamber-Johnson rugged construction and reliability
- VESA 75mm mounting pattern
- 3-Year Limited Warranty

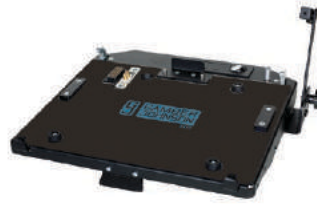


B300

ITEM NUMBERS:

7160-0570-00 Cradle, No Electronics
7160-0526-00 Dock, No RF
7160-0526-02 Dock, Dual RF

- Internal/protected circuit board and power supply protect against dirt and dust
- Keyed alike lock, push button key lock releases docking connector
- Simple, one-handed, docking mechanism:
 - Pull side handle forward to dock
 - Unlock the key button to release and undock computer
- Brass locating pins for precise computer placement
- Floating docking connector for reliable docking connection
- Interlocking mechanism protects against connector damage & prevents engagement until properly mounted
- Forward facing ports for low mounting capability, minimal cable strain and minimal swivel resistance
- Power switch with LED light and optional by-pass capability:
 - Green LED indicates power to the docking station
- USB 3.0 compliant
- Gamber-Johnson mounting hole pattern
- 3-Year Limited Warranty
- Optional 4 and 5 Year Extended Warranty available



V110

ITEM NUMBERS:

7160-0568-00 Cradle, No Electronics
7160-0568-03 Cradle, Tri RF - SMA
7160-0515-00 Dock, No RF
7160-0515-03 Dock, Tri RF - SMA
7170-0242 KIT: Dock, No RF, LIND 90W Auto Power Supply
7170-0243 KIT: Dock, Tri RF - SMA, LIND 90W Auto Power Supply

- Compatible with Getac V110 convertible computer
- Getac electronics
- Can be used in tablet or laptop position
- Push button latch with keyed lock for theft deterrence:
 - Push the latch to release the docking connector
 - Insert computer and push latch closed to dock computer
- Front-facing I/O ports, integrated cable strain relief system
- POGO pin style docking connector for easy docking activation
- Front safety bracket helps align computer for proper docking connectivity
- Built-in stylus holder
- Screen support included
- VESA 75mm mounting pattern
- 3-Year Limited Warranty



NOTEPAD™ TOUCH UNIVERSAL TABLET CRADLE

ITEM NUMBERS:

7160-1299-00 NotePad Touch
7160-1299-10 NotePad Touch XL

- Patented "slam latch" technology for easy one-handed operation
- Optional keyed lock for theft deterrence
- Height, Width, and depth adjustable to accommodate almost any size tablet computer
- Two cradle sizes available:
 - NotePad Touch XL can be adjusted to fit tablets with the following dimensions:
 - Length: 10.0 - 13.0 in / 25.4 - 33.0 cm
 - Height: 7.0 - 9.7 in / 7.7 - 24.6 cm
 - Depth: 0.28 - 1.12 in / 0.71 - 2.8 cm
 - NotePad Touch can be adjusted to fit tablets with the following dimensions:
 - Length: 7.8 in - 10.9 in / 19.8 - 27.6 cm
 - Height: 4.5 in - 7.3 in / 11.4 - 18.5 cm
 - Depth: 0.28 in - 1.12 in / 0.71 - 2.8 cm
- Composite/aluminum design for reduced weight and extended durability
- VESA 75mm and AMPS mounting patterns
- Limited Lifetime Warranty



WWW.GAMBERJOHNSON.COM

3001 Borham Avenue, Stevens Point, WI 54481, U.S.A.
800.487.9220 | sales@gamberjohnson.com