



CASE STUDY:

CITY OF KISSIMMEE POLICE DEPARTMENT

Florida, USA

The Cause

Never is the Gamber-Johnson mission of “supporting technology to help save the world” more evident than when working with police, fire and emergency medical services who rely on Gamber products every day. Our products help these heroes better protect and serve — and save lives.

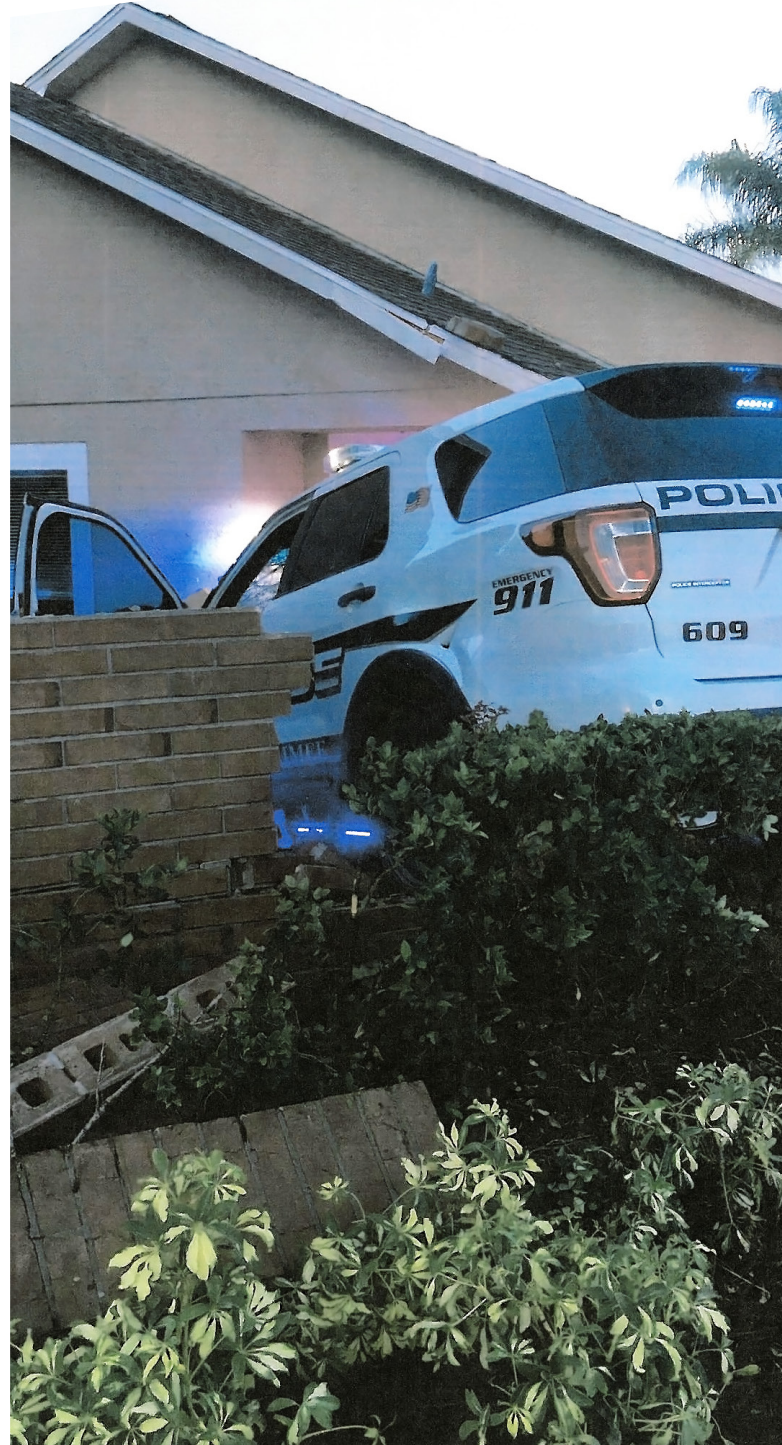
The Customer

The City of Kissimmee Police Department has 131 sworn officers and 83 civilian personnel. Their fleet includes 225 police and specialty vehicles. To keep their vehicles running like new, they have ten service bays, two tire service bays and one service pit.

When the City of Kissimmee Police Department decided to install Getac B300 laptops in their vehicles, they mounted them using Gamber-Johnson docking stations and Mongoose® motion attachments because of their ability to lock the rugged computers in place with unmatched reliability.

The Challenge

The department had the right equipment in place, but the question of how securely it would hold up in a crash remained. On an August night, Corporal Christopher Breuer found out firsthand.





Corporal Breuer was driving his Ford Utility Police Interceptor down a 40 m.p.h. (64 k.p.h.) road in response to a domestic battery call. Though he had his emergency lights on and his siren activated, a driver in a Nissan Altima failed to notice the approaching police vehicle and made a left turn into Corporal Breuer's path of travel.

In an effort to minimize the impact, Corporal Breuer swerved to the right and struck the rear of the Nissan. His steering locked up and the SUV hit a curb then went airborne, striking a nearby brick wall and finally crashing to a halt as the vehicle careened against a house.

"Because he was wearing his seat belt and had well built equipment in his vehicle, Corporal Breuer was not injured in the crash."

— Jeffrey O'Dell, Chief of Police

The Results — Rugged, Reliable, Responsive

The Getac B300 docking station and Mongoose motion attachment had both been thoroughly tested for safety by Gamber-Johnson. The docking station features a sliding handle which locks the laptop in place to ensure that — even in a crash like Corporal Breuer's — the computer won't eject from the mount and become a dangerous airborne projectile endangering the lives of all in its path.

This equipment functioned so flawlessly that even the computer was still operational after the battery was repositioned correctly. Under the most extreme and rugged circumstances, Gamber-Johnson provided responsive, reliable results. In this case, it was our honor to contribute to the safety of a hero who selflessly protects the safety of others while in the line of duty, every day.

The Company

Gamber-Johnson is a leading supplier of rugged mounting systems that safely secure mobile communication systems, computers and other electronic equipment in fleet vehicles, public safety vehicles, forklifts and other mobility applications. Their products are used by law enforcement, public safety, military, and warehouse fleets around the globe and are known for being rugged, reliable and responsive. Founded in 1954 Gamber-Johnson is located in Stevens Point, WI. To learn more about Gamber-Johnson visit gamberjohnson.com.