



**Panasonic**  
**MATERIAL**  
**HANDLING**

RUGGED. RELIABLE. RESPONSIVE.™

# SECURE YOUR ASSETS WITH A NAME YOU CAN TRUST

Gamber-Johnson is the global leader in equipment mounting products — driven by our mission of “*supporting technology to help save the world.*” We manufacture components and systems for every mounting solution, all meticulously designed to be **rugged, reliable, and responsive**. Gamber-Johnson is a trusted name in the industry; long known as the go-to partner for major rugged computer OEMs. As a pioneer in design innovation — receiving numerous awards and accolades as an industry leader — Gamber-Johnson has been the preferred choice for decades.

HARNESS THE POWER OF GAMBER-JOHNSON'S LASER-LIKE FOCUS ON INNOVATION WITH THE PERFECT MOUNTING SOLUTION FOR YOUR LIFT VEHICLE.







# MOUNTING SOLUTIONS FOR EVERY LIFT VEHICLE

Secure your tablets and equipment with our superior mounting solutions, for ultimate peace of mind. We offer a wide range of turnkey solutions that are configurable for your material handling vehicle's specific make and model. Our ergonomic no-drill solutions enhance driver efficiency, reduce installation time, speed up operations, and improve overall workplace safety. To narrow down the best solution for your fleet begin by asking yourself these four important questions:

## 1. WHAT DEVICE IS BEING MOUNTED?

Identifying your device ensures that you get the correct dock or cradle to support your specific need and desired connectivity.

## 2. WHAT MODEL VEHICLE IS THE DEVICE BEING MOUNTED TO?

Knowing the make and model of your vehicle will allow us to recommend the best location and corresponding product needed to mount your device.

## 3. WHAT IS THE VEHICLE'S VOLTAGE?

By knowing the voltage or power requirement of your lift vehicle we can ensure that you get the appropriate power supply for your specific need.

## 4. WHAT ACCESSORIES ARE BEING MOUNTED?

Understanding your accessory needs will allow us to build the best material handling solution for your team.







GAMBER-JOHNSON  
**CRADLES AND  
DOCKING STATIONS**





# CRADLES & DOCKING STATIONS

Secure your tablets and other devices with a Gamber-Johnson cradle or docking station. Cradles keep your device safe and secure without port access, while docking stations replicate the device's ports for easy and secure access. Either way — we have a solution that will meet your needs in the most secure, ergonomic configuration possible.

## PANASONIC FZ-L1



## TOUGHPAD® FZ-G1

### ITEM NUMBERS:

7160-0490-00 Cradle, No Electronics  
VESA 75mm  
7160-0487-00 Dock, No RF,  
VESA 75mm  
7160-0487-02 Dock, Dual RF,  
VESA 75mm  
7160-0489-00 Cradle, No Electronics,  
GJ Hole Pattern  
7160-0486-00 Dock, No RF, GJ Hole  
Pattern  
7160-0486-02 Dock, Dual RF, GJ Hole  
Pattern

### FEATURES:

- Accommodates extended battery, smart card reader, rear hand strap and bumper guards
- Alignment tabs prevent damage to the docking connector when docking the computer
- Docking station can be mounted either vertically or horizontally
- Top-facing I/O ports: HDMI, VGA, Ethernet, USB 3.0 (2), Serial, power supply input
- No RF and Dual RF options
- VESA 75mm mounting patterns
- 3-Year Limited Warranty



## TOUGHPAD® FZ-M1

### ITEM NUMBERS:

7160-0543-00 Cradle, No Electronics  
7160-0531-03 Dock, No RF, Full Port  
Replication  
7160-0531-04 Dock, Dual RF, Full Port  
Replication  
7160-0531-00 Dock, No RF, Lite Port  
Replication  
7160-0531-02 Dock, Dual RF, Lite Port  
Replication

### FEATURES:

- Accommodates mag strip reader or hand strap
- Downward-facing I/O ports: HDMI, VGA, Ethernet, USB 3.0 (2), Serial, power supply input
- Lite port replication without HDMI and VGA
- Cable strain relief, cable management system
- No RF and dual RF options
- Push and Turn lock with key for theft deterrence
- VESA 75mm or Gamber-Johnson mounting patterns
- 3-Year Limited Warranty



## TOUGHBOOK® FZ-L1

### ITEM NUMBERS:

7160-1314-04 Cradle, No Electronics  
Thick Model  
7160-1314-00 Dock, No RF,  
Thick Model  
7160-1314-02 Dock, Dual RF,  
Thick Model  
7160-1314-14 Cradle, No Electronics,  
Thin Model  
7160-1314-10 Dock, No RF,  
Thin Model  
7160-1314-12 Dock, Dual RF,  
Thin Model

### FEATURES:

- Accommodates the rotating hand strap, large battery, and bar code reader (thick model only)
- Easy to use one-handed operation for docking and release
- Access to all tablet control buttons and ports while tablet is docked
- Optional keyed lock for theft deterrence
- Rear-facing I/O ports: (1) USB 2.0
- Integrated cable restraint and cable management system
- VESA 75mm and AMPs mounting patterns
- 3-Year Limited Warranty



## TOUGHBOOK® FZ-N1

### ITEM NUMBERS:

7160-0901-00 Cradle, No Electronics  
7160-0900-00 Cradle, Powered

### FEATURES:

- Access to port and computer buttons when docked
- AMPs, NEC, and keyhole slot mounting patterns
- Power-in port with cable restraint
- Accommodates magnetic card reader, hand strap, and extended battery
- Push button lock with key
- Front bracket and side channels for docking
- Powered charging option
- 3-Year Limited Warranty

### CERTIFICATES & TESTING:

Panasonic Toughbook Certified, MIL-STD 810G Shock/Vibration, SAE J1455 Crash Test, RoHS, FCC, CE, E-Mark, Cycle Tested - Lock & Docking Mechanism

\*See website for more certifications on each docking station



GAMBER-JOHNSON  
**OVERHEAD GUARD  
LEG MOUNTS**



## CLAM SHELLS

Our Clam Shell line is Gamber-Johnson's staple product when it comes to extending the usability of technology into the mobile world of material handling. Easily attach any device, dock, cradle, or interface plate with the multiple hole patterns featured on the product. Our Clam Shells work to tailor to individual operator comfort and safety by providing a wide range of adjustments for optimal viewing of a device, improved visibility, and proximity to the operator.



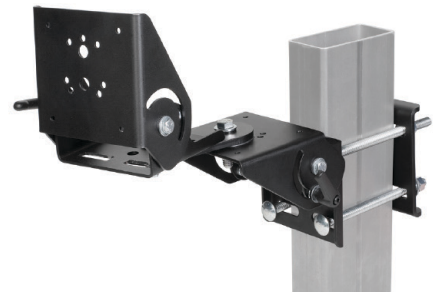
**7160-0357**  
Clam Shell with Small Backer Plate

**7160-0370**  
Clam Shell with Large Backer Plate



**7160-0366**  
Dual Clam Shell with Small Backer Plate

**7160-0367**  
Dual Clam Shell with Large Backer Plate



**7160-0420**  
Dual Clam Shell with Arm and Small Backer Plate

**7160-0421**  
Dual Clam Shell with Arm and Large Backer Plate

## ROLL FORM BRACKETS

We have the ideal products for every mounting situation; including lift vehicles that have roll formed overhead guard legs. These brackets conform perfectly to various roll formed profiles ultimately creating a solid foundation to adapt our Clam Shell product line.



**7160-0418**  
For Yale/Hyster, Crown, Clark and others

**7160-0814**  
For Jungheinrich / CAT / Toyota

**7160-0815**  
For Linde Models EV-30 and EV40

## Zirkona DIAMOND PLATE MOUNTS

When it comes to mounting lightweight devices turn to Gamber-Johnson's diamond plate mounts for a reliable solution. Multiple product offerings to interface your device with various hole patterns and ample adjustability to accommodate operator comfort and ease of use.



**7160-1261**  
Zirkona 4" Diamond Plate with Large Joiner and AMPS/NEC Plate

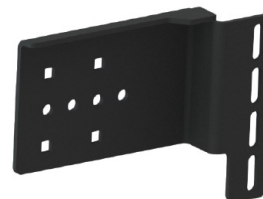
**7160-1261-01**  
Zirkona 4" Diamond Plate with Large Joiner and VESA 75mm Plate

## CAB MOUNTS

Secure your valuable tablets and devices right in the cab of your material handling vehicle using one of our reliable OEM specific mounts. Perfectly suited to tailor your workspace to the most efficient, ergonomic, and secure configuration, all while protecting your valuable assets and lift vehicle operators.



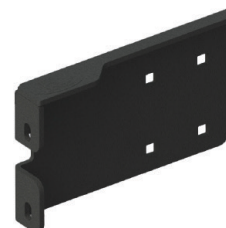
**7160-1151**  
Toyota Cab Latch Mount  
for Electronic Hydraulics



**7160-1233**  
Toyota Cab Mount



**7160-1096**  
Clamp Bracket Adapter



**7160-1103**  
Linde E30 Latch Mounting Bracket



**7160-1278**  
Yale Hyster 40/70 Cab Mount



**7160-1109**  
Yale/Hyster Electric Bracket

## HORIZONTAL EXTENSION

Increase your usable mounting space with our horizontal extension giving you more room to mount a total solution. Compatible with all Gamber-Johnson's roll formed and tube clamp brackets to ensure secure fitment to any overhead guard leg profile.



**7160-0363**  
Horizontal Extension Bar



## TUBE CLAMP MOUNTS

Expand your mounting location options by connecting your solution to multiple sizes of cylindrical poles, handles, or tubular style overhead guard legs. Adapt a Clam Shell product to finalize the total solution.



**7160-0561**  
2", 2.5", 3" Diameter Tube Clamp



**7160-1356-01**  
Zirkona 2" to 3" Pole Mount with VESA 75mm Mounting Plate

**7160-1356**  
Zirkona 2" to 3" Pole Mount with AMPS/NEC Mounting Plate



**7160-1367-01**  
Zirkona 3/4" to 1 7/8" Pole Mount with VESA 75mm Mounting Plate

**7160-1367**  
Zirkona 3/4" to 1-7/8" Pole Mount with AMPS/NEC Mounting Plate







GAMBER-JOHNSON  
**OVERHEAD GUARD  
MOUNTS**





## OVERHEAD GUARD MOUNTS

Increase your operator's forward visibility by tucking your device up and out of the way. Directly mount from the overhead guard using various ergonomic options that best fit a wide variety of operator needs and preferences.



**7160-1156**  
Short Overhead Bar Mount



**7160-1156-01**  
Tall Overhead Bar Mount



**7160-0368**  
Overhead Guard Mount with  
Single Clam Shell



**7160-0856**  
Vertical  
Extension Bar





GAMBER-JOHNSON  
**PERIPHERAL MOUNTS**





## POWER SUPPLIES, WIRING KITS & MOUNTS

Protect and power your valuable devices by pairing them with a clean, stable power source to guarantee functionality and longevity. Combine with a Gamber-Johnson Wiring Kit and Power Supply Mount for a professional look and quick installation.



**LIND Isolated Power Supply**  
\*See website for full assortment



**7400-0009**  
Wiring Kit



**7160-1333**  
Power Supply Clamp

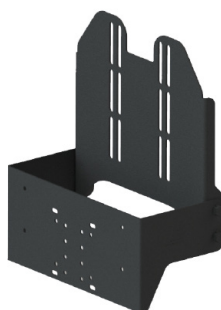


## KEYBOARD MOUNTS

Configure your keyboard for ultimate ease of use and the fastest possible access with our large selection of Keyboard Mounts. With an ergonomic angle that meets user needs, working on the keyboard in the field can be more streamlined and reliable than ever before.



**7160-0799**  
Tablet Keyboard Mount



**7160-1257**  
Vertical Tablet Keyboard Mount



**7160-1157**  
Fixed Tablet Keyboard Mount



**7160-0984**  
Low Profile Tablet Keyboard Bracket



**7160-0859**  
Number Pad Bracket



**iKey Rugged Keyboard**  
\*See website for full assortment



## HANDHELD SCANNER MOUNTS

Safeguard handheld scanners from accidental drops and catastrophic damage by housing your device with the right mount to fit your operation's needs.



**7160-1380**  
Pistol Grip Scanner Bracket  
**7170-0774**  
Zirkona, Pistol Grip Scanner Mount



**7160-1389**  
Scanner Pocket Tablet Mount



**7160-1259**  
Flat Surface Magnet Mount with Scanner Holder

## SAFETY LIGHTS & MOUNTS

Mount safety lights to present a visual alert to help increase warehouse safety, minimize the risk of accidents, and improve visible awareness of approaching lift vehicles.



**7160-0610**  
Single Light Bracket



**7160-0611**  
Dual Light Bracket



**7160-0850**  
TYRI Redline Light Mount



**TYRI Safety Lights**  
\*See website for full assortment





## PRINTER MOUNTS

Continue to expand from a desk to a mobile work environment by creating a secure and accessible way to mount rugged mobile printers.



**7160-1053**  
Zebra ZQ520 Printer Mount



**7160-0817**  
Zebra QLN420 Printer Bracket

\*See website for full assortment

## PROTECTIVE COVERS

Encase your device with Gamber-Johnson's patented selection of thermal and non-thermal protective covers. Designed to keep your device safe from the harsh elements in unforgiving work environments that could prematurely destroy your assets.



**7160-0949** - 8" Protective Cover  
**7160-0950** - 10" Protective Cover  
**7160-0981** - 8" Thermal Protective Cover  
**7160-0982** - 10" Thermal Protective Cover



## READY TO MAKE A PURCHASE?

Find a dealer in your area:  
[gamberjohnson.com/FindAReseller](http://gamberjohnson.com/FindAReseller)

## HAVE ADDITIONAL QUESTIONS?

Contact our experts:  
[sales@gamberjohnson.com](mailto:sales@gamberjohnson.com)



---

RUGGED. RELIABLE. RESPONSIVE.™