



# INSTALLATION INSTRUCTIONS

## Product

**7170-0744-01 - STEEL STANDARD TOP BAR**  
**7170-0744-02 - STEEL LIGHT BAR**

## Revision

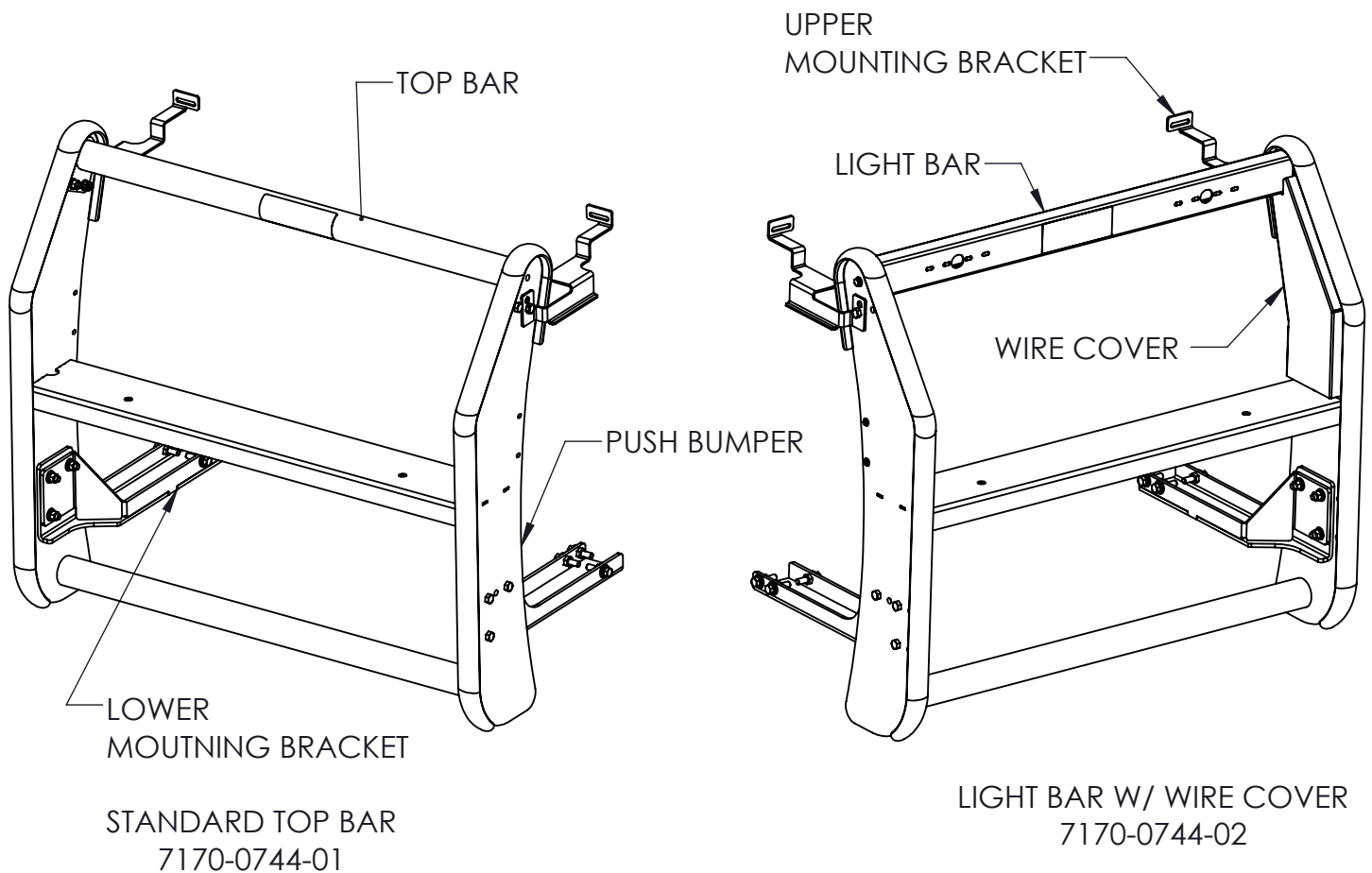
B

## Form

INST-898

**PUSH BUMPER - CHEVROLET TAHOE 2015+**

**Printing Spec: PS-001**



These instructions cover the installation of the Gamber-Johnson push bumper on 2015 and newer Chevrolet Tahoe. The push bumper can be purchased in the standard and light bar configurations. In the standard configuration the push bumper features a bolt in round top bar. In the light bar configuration the push bumper features a flat mounting bar for lights as well as two wire chase covers for routing wires down the sides of the push bumper. Both configurations feature the same push bumper as well as mounting brackets.

#### Product Mounting Disclaimer

Gamber-Johnson is not liable under any theory of contract or tort law for any loss, damage, personal injury, special, incidental or consequential damages for personal injury or other damage of any nature arising directly or indirectly as a result of the improper installation or use of its products in vehicle or any other application. In order to safely install and use Gamber-Johnson products full consideration of vehicle occupants, vehicle systems (i.e., the location of fuel lines, brake lines, electrical, drive train or other systems), air-bags and other safety equipment is required. Gamber-Johnson specifically disclaims any responsibility for the improper use or installation of its products not consistent with original vehicle manufactures specifications and recommendations, Gamber-Johnson product instruction sheets, or workmanship standards as endorsed through the Gamber-Johnson Certified Installer Program.

© Copyright 2019 Gamber-Johnson, LLC

If you need assistance or have questions, call Gamber-Johnson at 1-800-456-6868

## PUSH BUMPER INSTALL:

**NOTE - For vehicle equipped without OEM tow hook package see Step 1, for vehicles equipped with OEM tow hook see Step 2.**

**1.** For vehicles without the OEM tow hook may need to remove the lower front mold and make an opening for the vehicle frame. (see below, then continue to step 3. )



Lower front mold

Note: Create a square cut out (5 inches wide X height of mold ) 14 inches from center of the vehicle (**Check Alignment with vehicle before cutting**).

\*vehicle mold piece may have indent lines can be used as a guide for cutting, double check before cutting.

**2.** For vehicles with OEM tow hooks remove the tow hooks with 18mm socket and wrench.

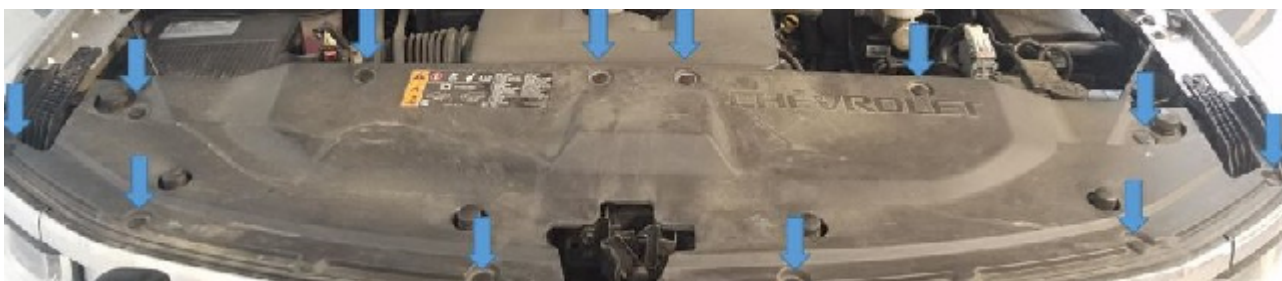
**3.** Attach the driver side bracket by sliding through the tow hook opening in the front bumper and into the vehicle frame.

**4.** Attach the push bumper bracket to the frame with hardware 3/8 thick washer - 3/8 lock washer - 3/8-16 G8 bolts. repeat for the passanger side.

\*hand tight the bolts for now



**5.** To install the upper brackets, in the engine bay first remove the front engine shroud. to remove the plastic push-in clips use a clip tool or a flat head screwdriver insert into top of the clip and pull up slowly.



6. After removing the plastic shroud, then using a 10mm socket and ratchet remove the 6 bolts hold the grille.



7. After removing the bolts, pull on the grille carefully (grille is held in by clips **(marked in yellow arrow, grille will tilt forward, will not come off)** to gain space to insert the upper brackets.

8. In the grille cut away an opening as shown marked with blue arrow. Repeat for driver side as well.  
\*you may need to remove more material for easier install.



9. Remove the bolt with a 10MM socket, then feed the upper brackets through the new opening in the grille for both side and attach to vehicle with factory hardware. push grille back in place with clips and secure with factory bolts.



**10.** With bracket inplace then attach the push bumper to the brackets with 3/8-16 G8 bolts - 3/8 washer - 3/8 lock washer - 3/8-16 G8 nut. with everything aligned torqe down the hardware and check if anything is loose.

### **Bumper Adjustment Feature:**

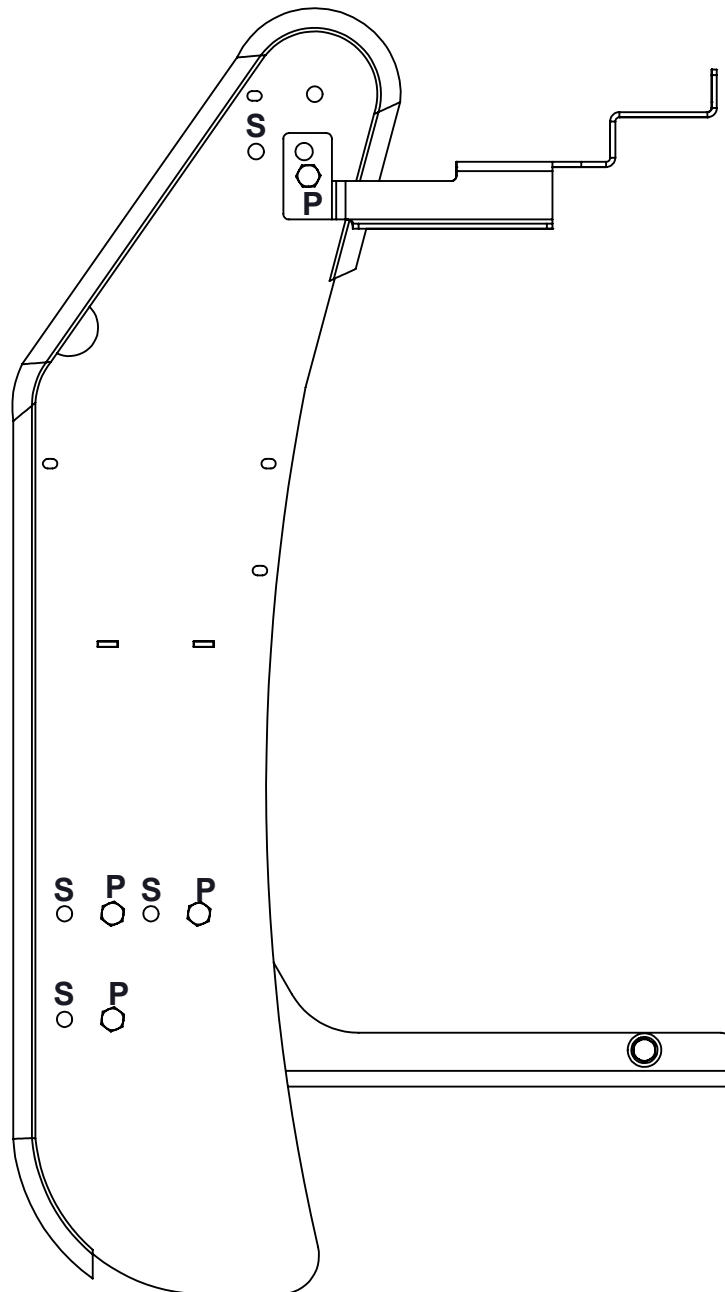
With Gamber-Johnson Push Bumpers it has a build in Adjustment feature to locate the push bumper in Standard or Push position. In the "Push position" the bumper will be located farther from the vehicle to reduce damage during use.

\*if customer has the upper bar option, the upper bar and bracket will share hardware.

### **Position Locator:**

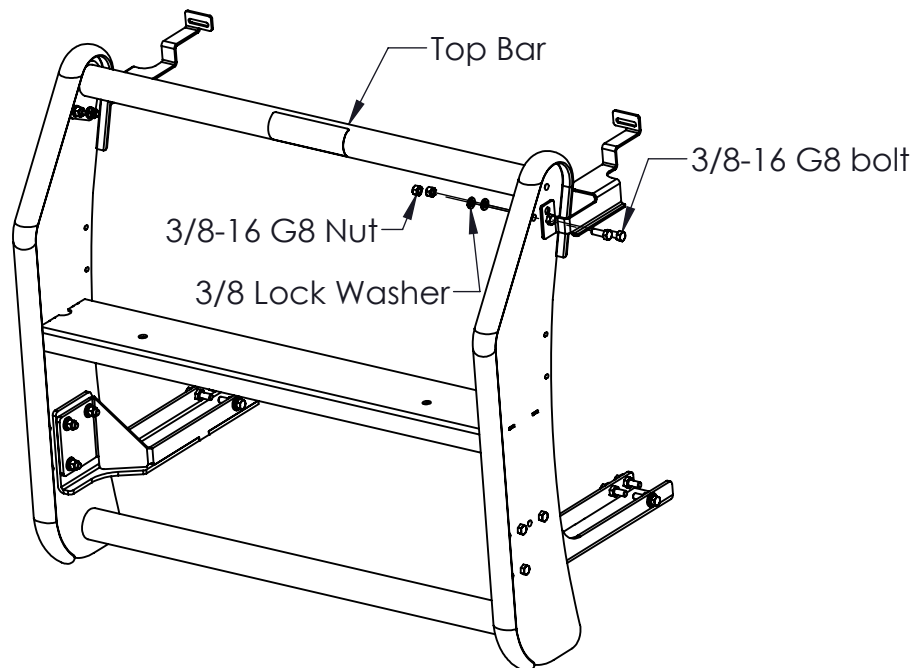
Push : bolt pattern will be marked "P"

Standard: bolt pattern will be marked "S"



### To Install Round Top Bar:

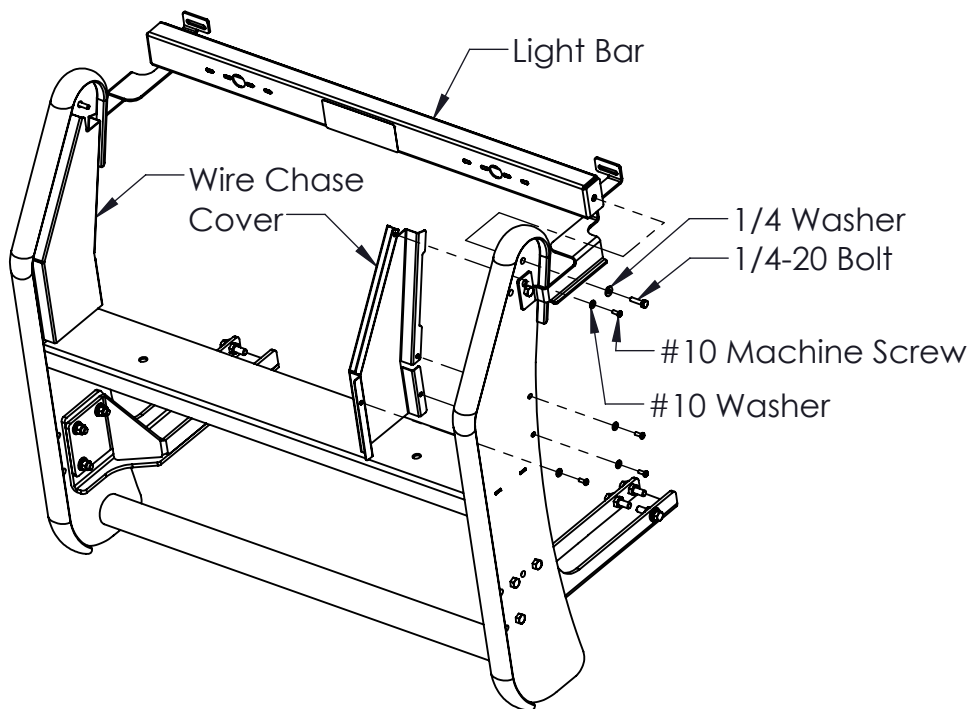
1. Bolt the round upper bar in place using the 3/8-16 x 1.00 bolts, lock washers and nuts provided.



### To Install Light Bar:

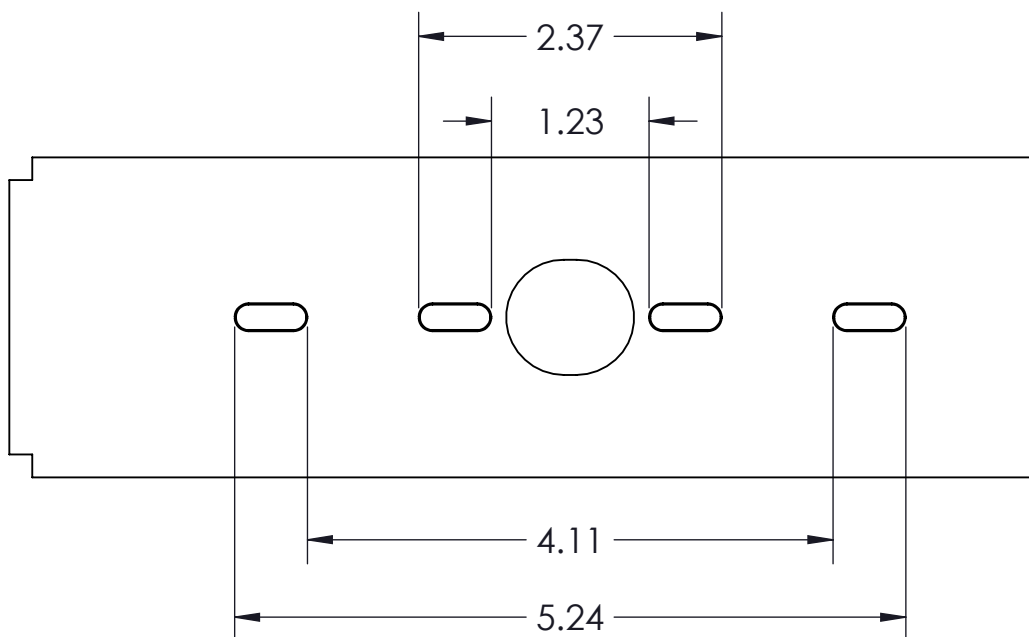
1. After the lights have been installed in the light bar, align the light bar and rear cover with the top holes in the push bumper. Wires can be guided through the notches at either end of the light bar. Install the light bar and cover using the 1/4-20 x 1.00 bolts and washers provided.

2. The side wire chase covers can be installed to guide wires down from the light bar to the flat plate in the middle of the push bumper. The covers are installed using #10-32 x 0.500 machine screws and #10 washers. The edges of the cover may need to be tucked underneath the flexible rubber strip on the front of the push bumper to be installed.



## To Install Lights on Bar:

1. Knock out the two knockouts that line up with the mounting holes of chosen light. Bolt light onto bar per light instructions.



## Acceptable Lights:

1. The light bar knockouts are designed for the following light models:

<b>Code3:</b>	M180 (surface mount)
	MR6 (surface mount)
<b>Federal Signal:</b>	MicroPulse
	MicroPulse Ultra
	MicroPulse Wide Angle
<b>Feneix:</b>	Fusion (surface mount)
<b>Sound Off Signal:</b>	mPower 3" Stud
	mPower 4" Stud
	nForce (surface mount)
<b>Whelen:</b>	ION (surface mount)
	T-ION