



INSTALLATION INSTRUCTIONS

Product

7160-0991: YALE/HYSTER 50-120 LP CAB DOOR BRACKET

Revision

REV. A

Form

INST-794

Printing Spec: PS-001

This instruction sheet covers the installation of the Gamber-Johnson Yale/Hyster 50-120 LP Cab Door Bracket (7160-0991). This product combined with compatible Gamber-Johnson products provides a dock/cradle mounting solution for a Yale/Hyster 50-120 fork truck.

Begin by locating the door handle to the right of the seat.

Lift up the composite boots on each end of the handle to access the mounting hardware.

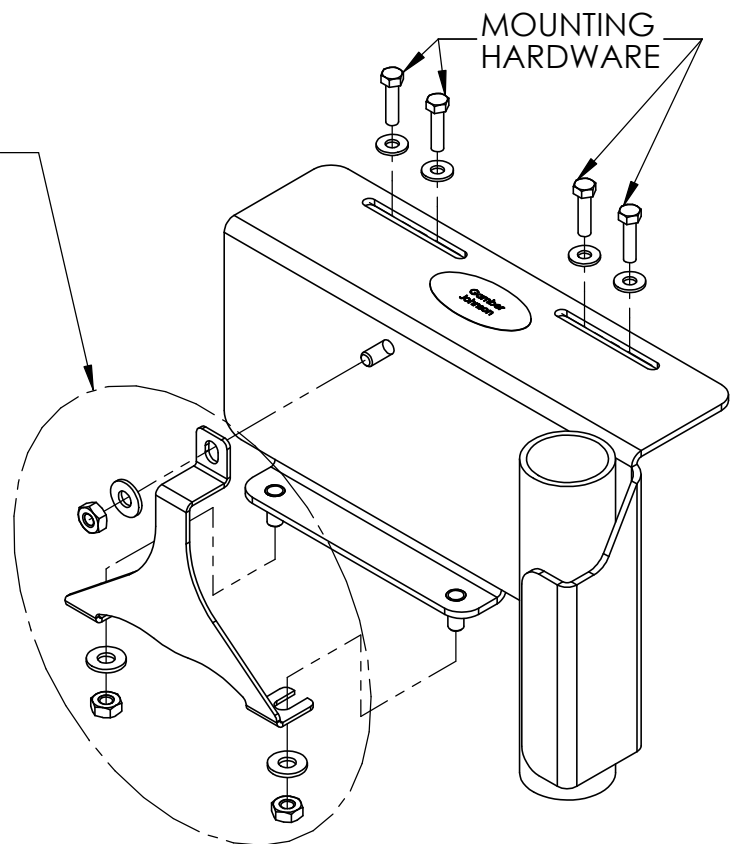
Remove the four screws and the handle. (NOTE: The handle hardware can be reused to mount the 7160-0991 Gamber-Johnson bracket if desired)

Align and mount the 7160-0991 Gamber-Johnson bracket using the desired hardware.

An additional bracket and hardware is included to mount a Lind power supply to the cab door bracket.



POWER SUPPLY
MOUNTING
HARDWARE
AND BRACKET



Product Mounting Disclaimer

Gamber-Johnson is not liable under any theory of contract or tort law for any loss, damage, personal injury, special, incidental or consequential damages for personal injury or other damage of any nature arising directly or indirectly as a result of the improper installation or use of its products in vehicle or any other application. In order to safely install and use Gamber-Johnson products full consideration of vehicle occupants, vehicle systems (i.e., the location of fuel lines, brakes lines, electrical, drive train or other systems), air-bags and other safety equipment is required. Gamber-Johnson specifically disclaims any responsibility for the improper use or installation of its products not consistent with the original vehicle manufacturers specifications and recommendations, Gamber-Johnson product instruction sheets, or workmanship standards as endorsed through the Gamber-Johnson Certified Installer Program.

© Copyright 2017 Gamber-Johnson, LLC

If you need assistance or have questions, call Gamber-Johnson at 1-800-456-6868