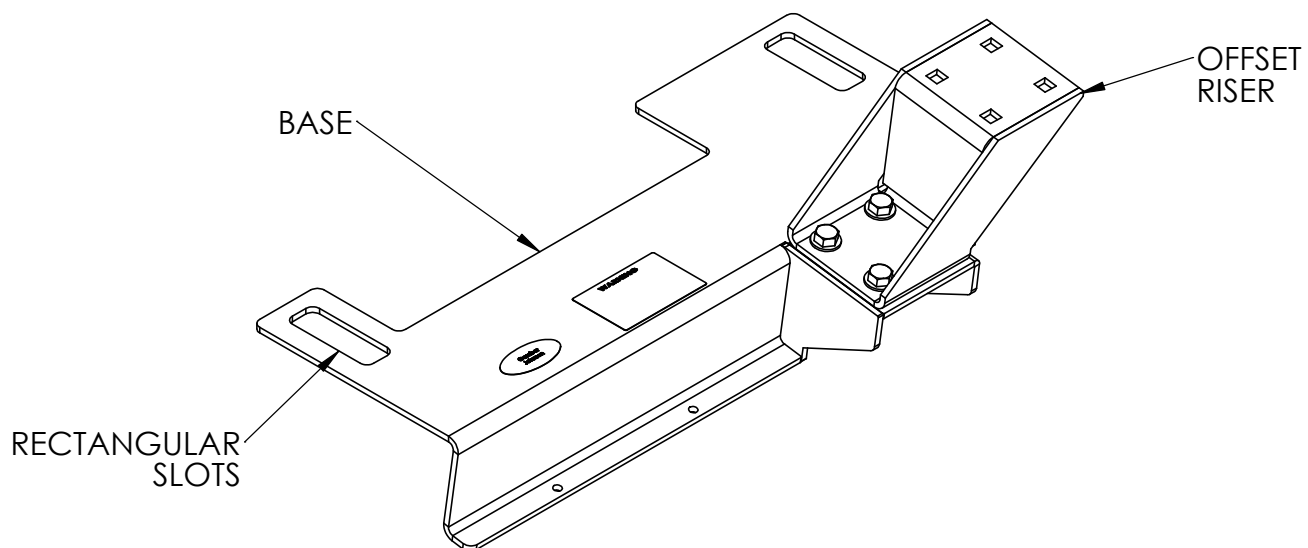




INSTALLATION INSTRUCTIONS

Product**7160-0969****Revision****Rev.A****Form****INST-782****BASE - CHEVY MALIBU 2017+ NO DRILL****Printing Spec:PS-001**

- You must read and follow all of these installation instructions. Failure to follow the installation instructions may result in serious bodily injury or death
- DO NOT install or use this assembly in the area in which the airbag on the vehicle may be deployed. The installer and user of this assembly are responsible for installing and using this assembly outside the area in which an airbag may be deployed. (See Product Mounting Disclaimer Below)
- Keep these installation instructions with the product and readily available in the vehicle for future reference of other users of the product.
- Additional copies of the installation instruction can be obtained from Gamber-Johnson. If you need assistance or have any questions, go to www.gamberjohnson.com or call Gamber-Johnson at 1-800-456-6868.
- DO NOT remove the warning label from product under any circumstances.

Product Mounting Disclaimer

Gamber-Johnson is not liable under any theory of contract or tort law for any loss, damage, personal injury, special, incidental or consequential damages for personal injury or other damage of any nature arising directly or indirectly as a result of the improper installation or use of its products in vehicle or any other application. In order to safely install and use Gamber-Johnson products full consideration of vehicle occupants, vehicle systems (i.e., the location of fuel lines, brakes lines, electrical, drive train or other systems), air-bags and other safety equipment is required. Gamber-Johnson specifically disclaims any responsibility for the improper use or installation of its products not consistent with the original vehicle manufactures specifications and recommendations, Gamber-Johnson product instruction sheets, or workmanship standards as endorsed through the Gamber-Johnson Certified Installer Program.

© copyright 2017 Gamber-Johnson, LLC

If you need assistance or have questions, call Gamber-Johnson at 1-800-456-6868

Installing the Vehicle Base

1. Remove the front two seat bolts and loosen the two rear seat bolts on the passenger seat using a T-50 bit. The seat will need to be moved forward to access the rear seat bolts. See FIG 1.
2. Place the vehicle base between the floor and passenger seat rails. The welded square nuts on the bottom of the seat rail as well as the guide pin on the inboard seat rail should fall into the rectangular slots in the base. See FIG 2 and FIG 3.

FRONT SEAT
BOLT



FIG 1 - Front Seat Bolts (T-50 Bit Required)



FIG 2 - Base installed between seat rail and floor

3. Position the vehicle base so the front flange is as far back as it will sit then reinstall the front seat bolts. Retighten the rear seat bolts that were loosened in step 1.
4. Install the offset riser using the 3/8-16 x .75 bolts and 3/8 washers included in the hardware bag. Install any additional equipment such as lower poles. See FIG 4.

SQUARE NUT

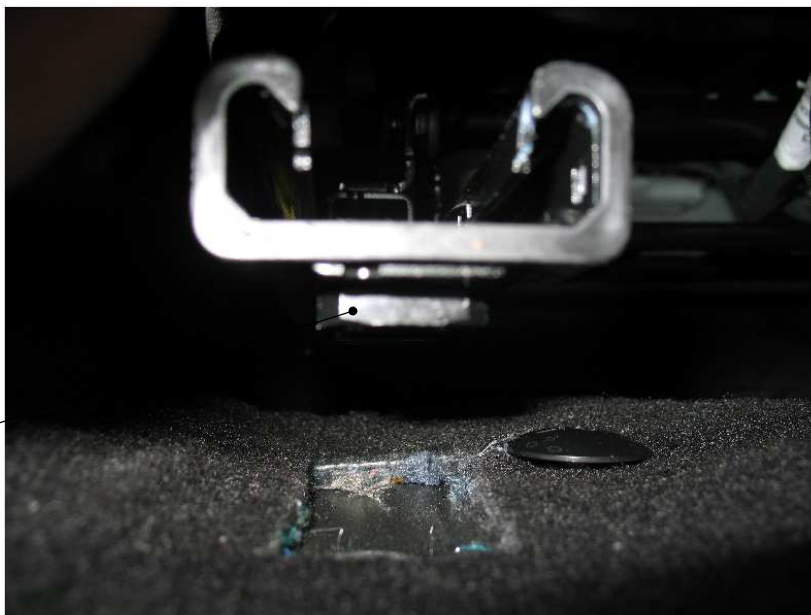


FIG 3 - Square nut on bottom of seat rail



FIG 4 - Offset riser installed on base



- This assembly should not be positioned in the area where the airbag may be deployed.
- DO NOT position the equipment in front of an airbag. Equipment positioned in front of an airbag may cause serious injury or death if an airbag is activated.
- If installation of the equipment requires that the equipment be placed in front of an airbag, the airbag should be deactivated. In order to secure permission for deactivating the airbag you must contact the National Highway Traffic Safety Administration at 1-800-424-9393 to gain permission to do so. If you have any questions or need assistance, call Gamber-Johnson at 1-800-456-6868.
- High speed vehicle turns may cause parts of the assembly to swivel, interfering with the driver or other equipment.